

## CNTLN RABBIT PAB

货号: S221720

产品全名: CNTLN 兔多抗

基因符号: C9orf39; C9orf101; bA340N12.1

**UNIPROT ID:** Q9NXG0 (Gene Accession - NP\_060208)

背景: Required for centrosome cohesion and recruitment of CEP68 to centrosomes.

抗原: Synthetic peptide of human CNTLN

经过测试的应用: ELISA, IHC

推荐稀释比: IHC: 25-100; ELISA: 5000-10000

种属反应性: Rabbit

克隆性: Rabbit Polyclonal

亚型: Immunogen-specific rabbit IgG

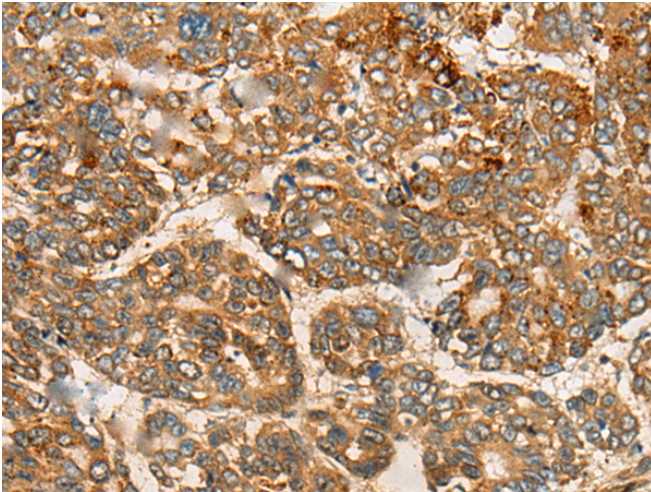
纯化: Antigen affinity purification

种属反应性: Human, Mouse

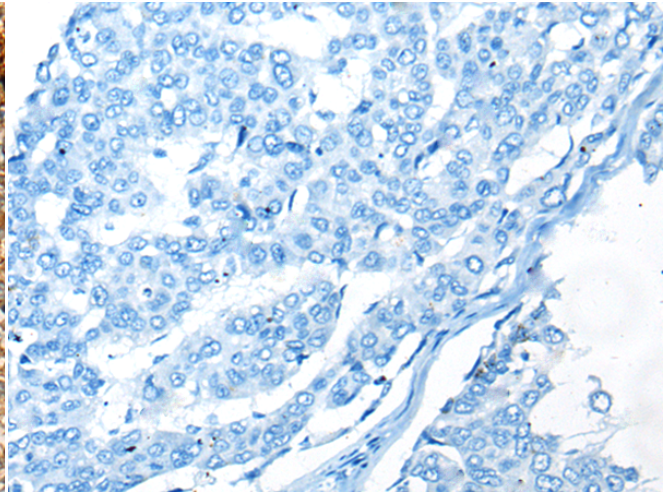
成分: PBS (without Mg<sup>2+</sup> and Ca<sup>2+</sup>), pH 7.4, 150 mM NaCl, 0.05% Sodium Azide and 40% glycerol

研究领域: Signal Transduction, Cancer

储存和运输: Store at -20°C. Avoid repeated freezing and thawing



Immunohistochemistry analysis of paraffin embedded Human liver cancer tissue using 221720(CNTLN Antibody) at a dilution of 1/30(Cytoplasm).



In comparison with the IHC on the left, the same paraffin-embedded Human liver cancer tissue is first treated with the synthetic peptide and then with 221720(Anti-CNTLN Antibody) at dilution 1/30.