

CNGA1 RABBIT PAB

货号: S219707

产品全名: CNGA1 兔多抗

基因符号: CNCG, CNG1, RP49, CNCG1, CNG-1, RCNC1, RCNCa, RCNCalpha

UNIPROT ID: P29973 (Gene Accession - NP_000078)

背景: The protein encoded by this gene is involved in phototransduction. Along with another protein, the encoded protein forms a cGMP-gated cation channel in the plasma membrane, allowing depolarization of rod photoreceptors. This represents the last step in the phototransduction pathway. Defects in this gene are a cause of retinitis pigmentosa autosomal recessive (ARRP) disease. Two transcript variants encoding different isoforms have been found for this gene.

抗原: Synthetic peptide of human CNGA1

经过测试的应用: ELISA, IHC

推荐稀释比: IHC: 25-100; ELISA: 500-5000

种属反应性: Rabbit

克隆性: Rabbit Polyclonal

亚型: Immunogen-specific rabbit IgG

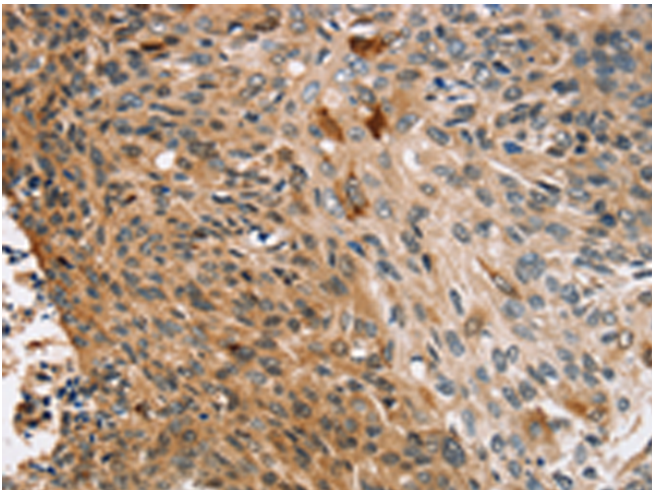
纯化: Antigen affinity purification

种属反应性: Human

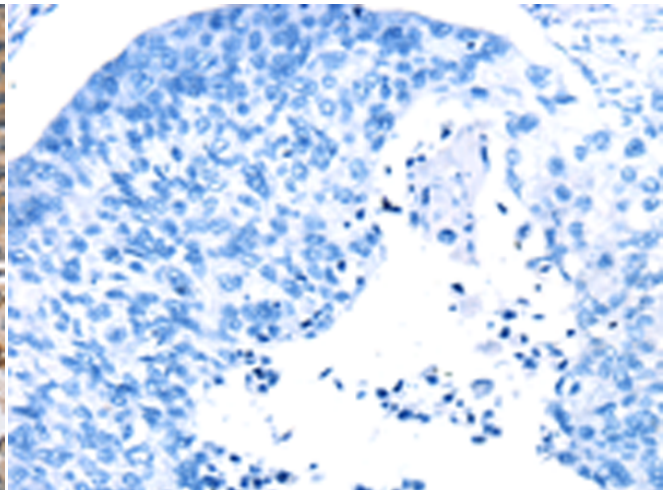
成分: PBS (without Mg²⁺ and Ca²⁺), pH 7.4, 150 mM NaCl, 0.05% Sodium Azide and 40% glycerol

研究领域: Signal Transduction, Neuroscience

储存和运输: Store at -20°C. Avoid repeated freezing and thawing



Immunohistochemistry analysis of paraffin embedded Human esophagus cancer tissue using 219707 (CNGA1 Antibody) at a dilution of 1/25 (Cytoplasm and Cell membrane).



In comparison with the IHC on the left, the same paraffin-embedded Human esophagus cancer tissue is first treated with the synthetic peptide and then with 219707 (Anti-CNGA1 Antibody) at dilution 1/25.