

CMTR2 RABBIT PAB

货号: S219400

产品全名: CMTR2 兔多抗

基因符号: AFT; MTr2; HMTr2; FTSJD1

UNIPROT ID: Q8IYT2 (Gene Accession - BC035005)

背景: S-adenosyl-L-methionine-dependent methyltransferase that mediates mRNA cap2 2'-O-ribose methylation to the 5'-cap structure of mRNAs. Methylates the ribose of the second nucleotide of a m7GpppG-capped mRNA and small nuclear RNA (snRNA) (cap0) to produce m7GpppRmpNm (cap2). Recognizes a guanosine cap on RNA independently of its N7 methylation status. Display cap2 methylation on both cap0 and cap1. Displays a preference for cap1 RNAs.

抗原: Fusion protein of human CMTR2

经过测试的应用: ELISA, IHC

推荐稀释比: IHC: 50-200; ELISA: 5000-10000

种属反应性: Rabbit

克隆性: Rabbit Polyclonal

亚型: Immunogen-specific rabbit IgG

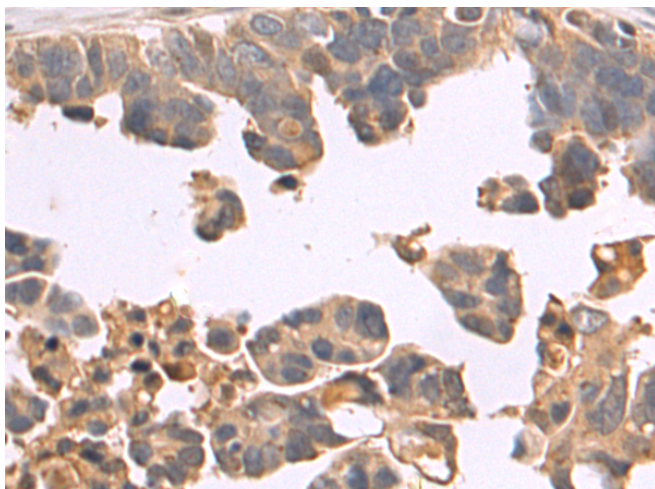
纯化: Antigen affinity purification

种属反应性: Human

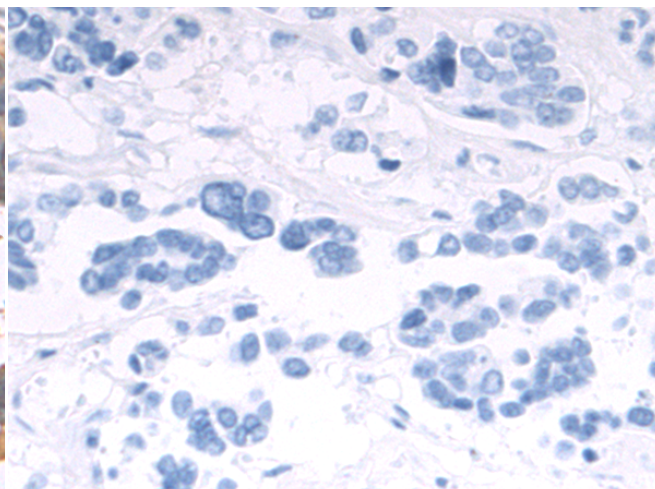
成分: PBS (without Mg²⁺ and Ca²⁺), pH 7.4, 150 mM NaCl, 0.05% Sodium Azide and 40% glycerol

研究领域: Cell Biology

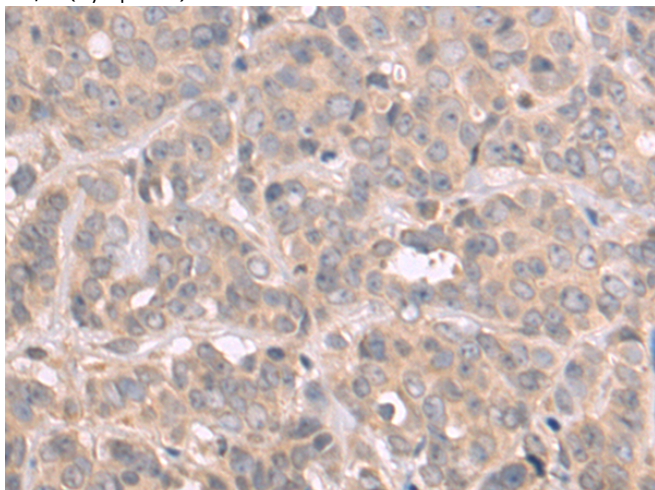
储存和运输: Store at -20°C. Avoid repeated freezing and thawing



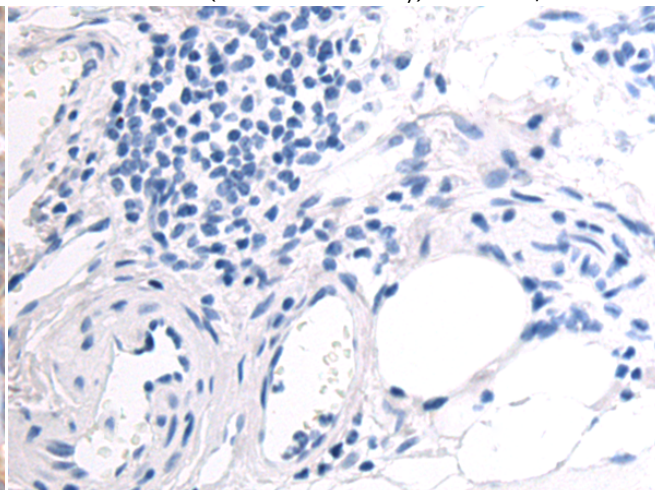
Immunohistochemistry analysis of paraffin embedded Human colorectal cancer tissue using 219400(CMTR2 Antibody) at a dilution of 1/80(Cytoplasm).



In comparison with the IHC on the left, the same paraffin-embedded Human colorectal cancer tissue is first treated with the fusion protein and then with 219400(Anti-CMTR2 Antibody) at dilution 1/80.



The image on the left is immunohistochemistry of paraffin-embedded Human breast cancer tissue using 219400(Anti-CMTR2 Antibody) at a dilution of 1/80.



In comparison with the IHC on the left, the same paraffin-embedded Human breast cancer tissue is first treated with fusion protein and then with D226767(Anti-CMTR2 Antibody) at dilution 1/80.



Product Description

Pioneering GTPase and Oncogene Product Development since 2010
