

CMPK1 RABBIT PAB

货号: S218514

产品全名: CMPK1 兔多抗

基因符号: CK; CMK; UMK; CMPK; UMPK; UMP-CMPK

UNIPROT ID: P30085 (Gene Accession - BC014961)

背景: This gene encodes one of the enzymes required for cellular nucleic acid biosynthesis. This enzyme catalyzes the transfer of a phosphate group from ATP to CMP, UMP, or dCMP, to form the corresponding diphosphate nucleotide. Alternate splicing results in both coding and non-coding transcript variants.

抗原: Full length fusion 蛋白

经过测试的应用: ELISA, WB, IHC

推荐稀释比: IHC: 20-100;WB: 200-1000;ELISA: 5000-10000

种属反应性: Rabbit

克隆性: Rabbit Polyclonal

亚型: Immunogen-specific rabbit IgG

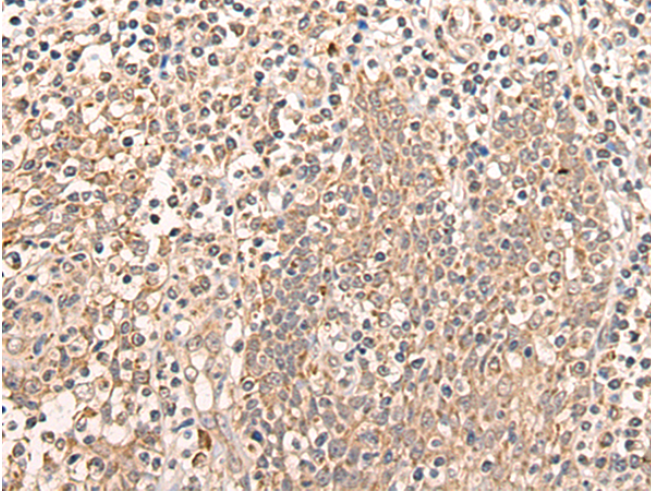
纯化: Antigen affinity purification

种属反应性: Human, Mouse, Rat

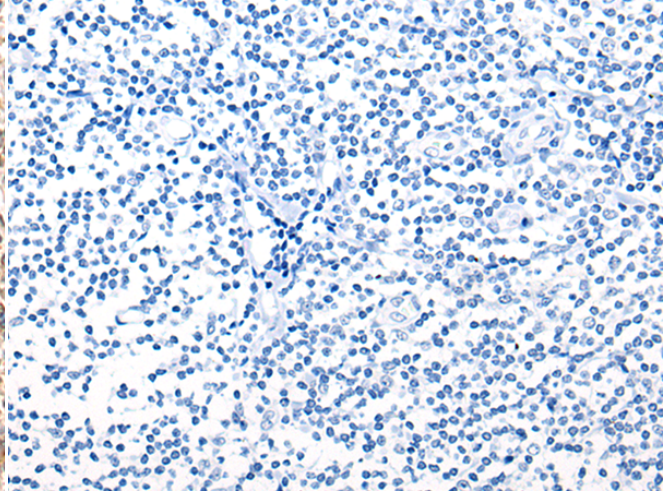
成分: PBS (without Mg²⁺ and Ca²⁺), pH 7.4, 150 mM NaCl, 0.05% Sodium Azide and 40% glycerol

研究领域: Epigenetics and Nuclear Signaling, Metabolism

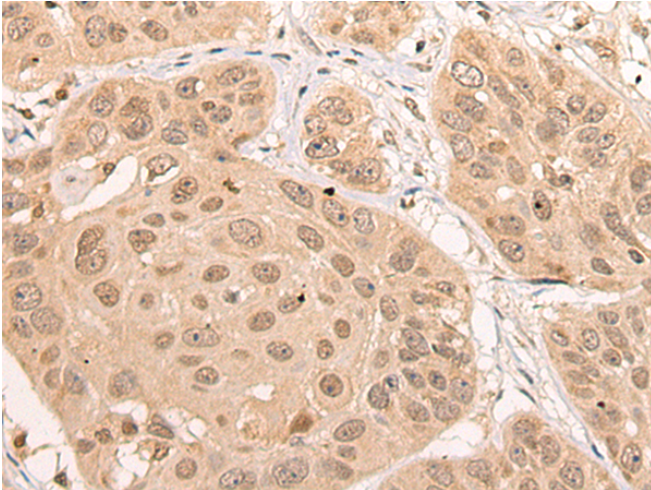
储存和运输: Store at -20°C. Avoid repeated freezing and thawing



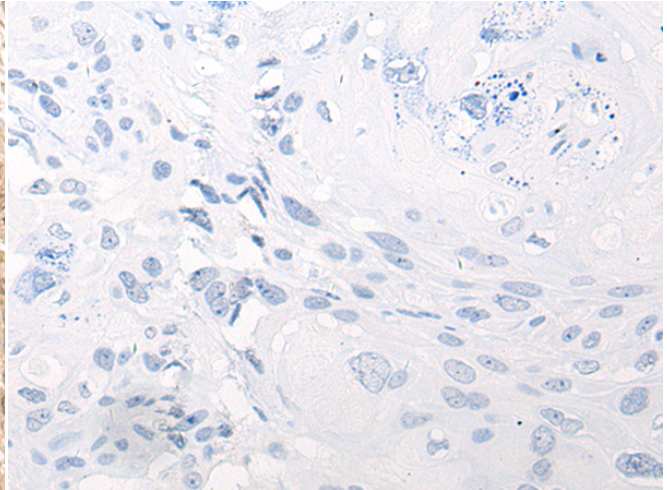
Immunohistochemistry analysis of paraffin embedded Human tonsil tissue using 218514(CMPK1 Antibody) at a dilution of 1/20(Cytoplasm or Nucleus).



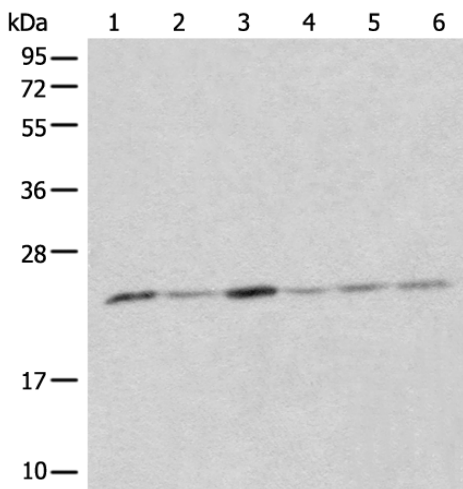
In comparison with the IHC on the left, the same paraffin-embedded Human tonsil tissue is first treated with the fusion protein and then with 218514(Anti-CMPK1 Antibody) at dilution 1/20.



The image on the left is immunohistochemistry of paraffin-embedded Human esophagus cancer tissue using 218514(Anti-CMPK1 Antibody) at a dilution of 1/20.



In comparison with the IHC on the left, the same paraffin-embedded Human esophagus cancer tissue is first treated with fusion protein and then with D224594(Anti-CMPK1 Antibody) at dilution 1/20.



Gel: 12%SDS-PAGE, Lysate: 40 µg;
Lane 1-6: HT-29, HeLa, HEPG2, A549, Jurkat and 231 cell lysate;
Primary antibody: 218514(CMPK1 Antibody) at dilution 1/200;
Secondary antibody: Goat anti rabbit IgG at 1/8000 dilution;
Exposure time: 10 seconds



Product Description

Pioneering GTPase and Oncogene Product Development since 2010
