

CMKLR1 RABBIT PAB

货号: S221189

产品全名: CMKLR1 兔多抗

基因符号: DEZ; RVER1; ChemR23; CHEMERINR

UNIPROT ID: Q99788 (Gene Accession - NP_004063)

背景: Enables adipokinetic hormone binding activity and adipokinetic hormone receptor activity. Involved in several processes, including negative regulation of NF-kappaB transcription factor activity; positive regulation of macrophage chemotaxis; and regulation of calcium-mediated signaling. Located in plasma membrane.

抗原: Synthetic peptide of human CMKLR1

经过测试的应用: ELISA, WB, IHC

推荐稀释比: IHC: 50-200;WB: 1000-5000;ELISA: 5000-10000

种属反应性: Rabbit

克隆性: Rabbit Polyclonal

亚型: Immunogen-specific rabbit IgG

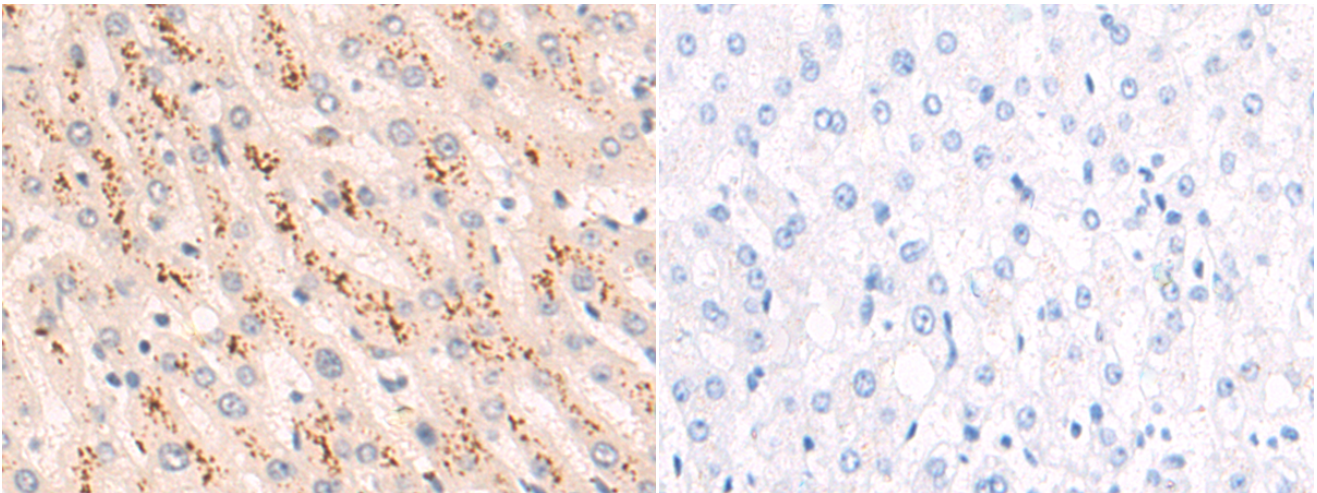
纯化: Antigen affinity purification

种属反应性: Human, Mouse

成分: PBS (without Mg²⁺ and Ca²⁺), pH 7.4, 150 mM NaCl, 0.05% Sodium Azide and 40% glycerol

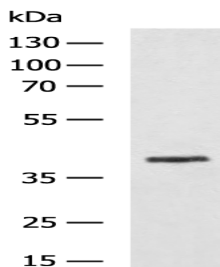
研究领域: Signal Transduction, Cell Biology

储存和运输: Store at -20°C. Avoid repeated freezing and thawing



Immunohistochemistry analysis of paraffin embedded Human liver cancer tissue using 221189(CMKLR1 Antibody) at a dilution of 1/50(Cytoplasm).

In comparison with the IHC on the left, the same paraffin-embedded Human liver cancer tissue is first treated with the synthetic peptide and then with 221189(Anti-CMKLR1 Antibody) at dilution 1/50.



Gel: 8%SDS-PAGE, Lysate: 40 µg;

Lane: NIH/3T3 cell lysate;

Primary antibody: 221189(CMKLR1 Antibody) at dilution 1/1000;

Secondary antibody: HRP-conjugated Goat anti rabbit IgG at 1/5000 dilution;

Exposure time: 30 seconds