

CMC1 RABBIT PAB

货号: S219429

产品全名: CMC1 兔多抗

基因符号: C3orf68

UNIPROT ID: Q7Z7K0 (Gene Accession - BC052644)

背景: Component of the MITRAC (mitochondrial translation regulation assembly intermediate of cytochrome c oxidase complex) complex that regulates cytochrome c oxidase assembly.

抗原: Fusion protein of human CMC1

经过测试的应用: ELISA, WB, IHC

推荐稀释比: IHC: 100-200;WB: 1000-5000;ELISA: 5000-10000

种属反应性: Rabbit

克隆性: Rabbit Polyclonal

亚型: Immunogen-specific rabbit IgG

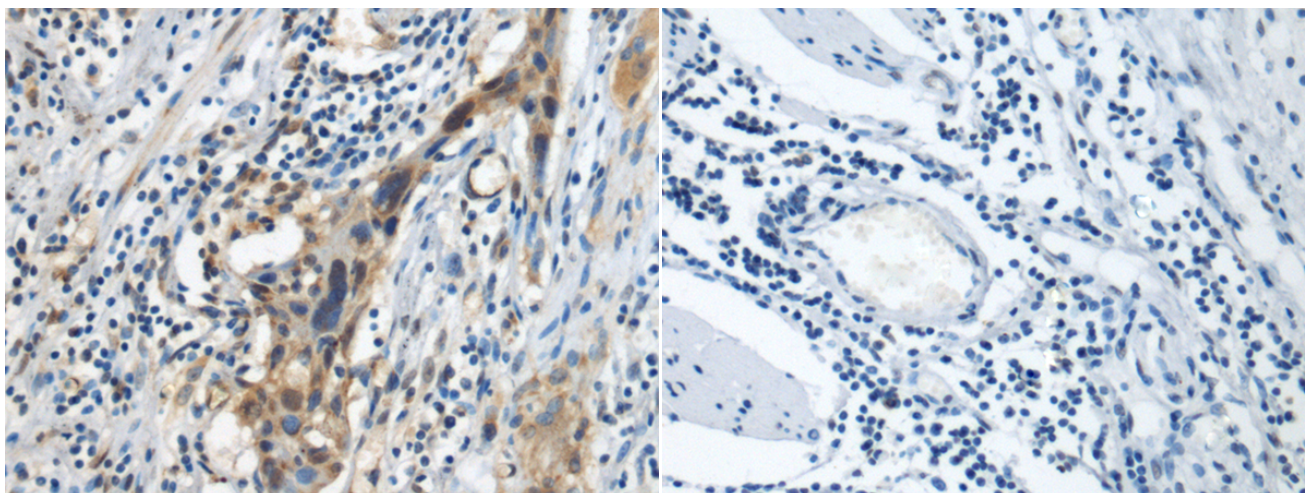
纯化: Antigen affinity purification

种属反应性: Human, Mouse

成分: PBS (without Mg²⁺ and Ca²⁺), pH 7.4, 150 mM NaCl, 0.05% Sodium Azide and 40% glycerol

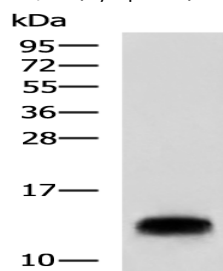
研究领域: Metabolism

储存和运输: Store at -20°C. Avoid repeated freezing and thawing



Immunohistochemistry analysis of paraffin embedded Human esophagus cancer tissue using 219429 (CMC1 Antibody) at a dilution of 1/100 (Cytoplasm).

In comparison with the IHC on the left, the same paraffin-embedded Human esophagus cancer tissue is first treated with the fusion protein and then with 219429 (Anti-CMC1 Antibody) at dilution 1/100.



Gel: 12% SDS-PAGE, Lysate: 40 µg;

Lane: Human liver tissue lysate;

Primary antibody: 219429 (CMC1 Antibody) at dilution 1/1200;

Secondary antibody: HRP-conjugated Goat anti rabbit IgG at 1/5000 dilution;

Exposure time: 1 minute