

CLU/APO J RABBIT PAB

货号: S218423

产品全名: CLU/APO J 兔多抗

基因符号: CLI; AAG4; APOJ; CLU1; CLU2; KUB1; SGP2; APO-J; SGP-2; SP-40; TRPM2; TRPM-2; NA1/NA2

UNIPROT ID: P10909 (Gene Accession - BC010514)

背景: The protein encoded by this gene is a secreted chaperone that can under some stress conditions also be found in the cell cytosol. It has been suggested to be involved in several basic biological events such as cell death, tumor progression, and neurodegenerative disorders. Alternate splicing results in both coding and non-coding variants.

抗原: Fusion protein of human CLU/APO J

经过测试的应用: ELISA, WB, IHC

推荐稀释比: IHC: 30-150; WB: 200-1000; ELISA: 5000-10000

种属反应性: Rabbit

克隆性: Rabbit Polyclonal

亚型: Immunogen-specific rabbit IgG

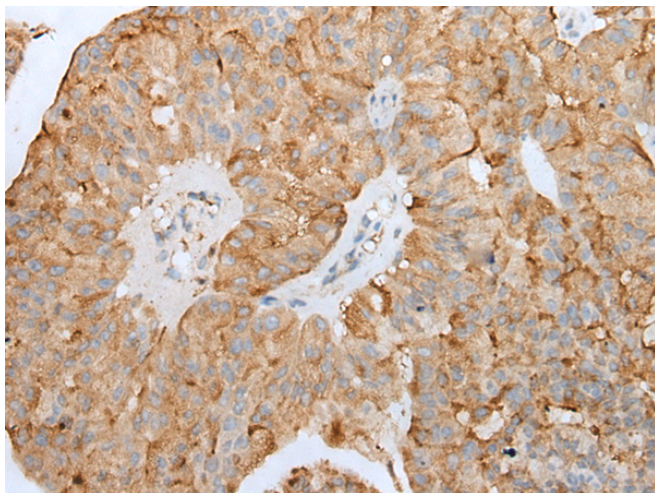
纯化: Antigen affinity purification

种属反应性: Human, Rat

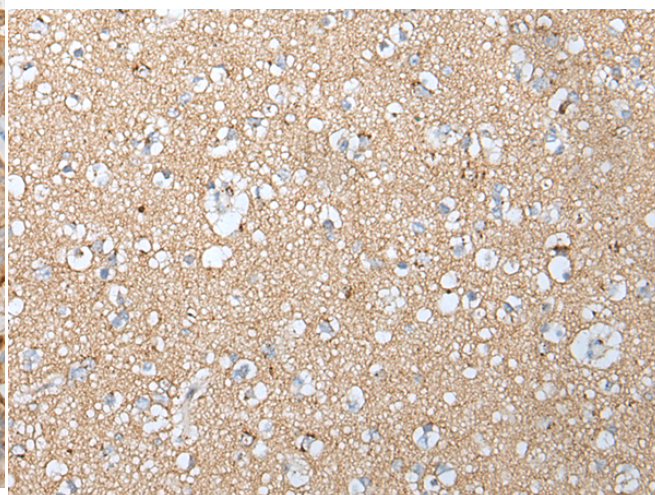
成分: PBS (without Mg²⁺ and Ca²⁺), pH 7.4, 150 mM NaCl, 0.05% Sodium Azide and 40% glycerol

研究领域: Metabolism, Signal Transduction, Cancer, Cardiovascular, Immunology

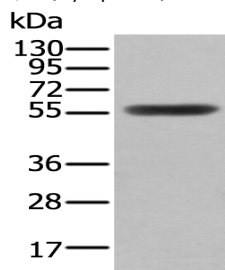
储存和运输: Store at -20°C. Avoid repeated freezing and thawing



Immunohistochemistry analysis of paraffin-embedded Human liver cancer tissue using 218423 (CLU/APO J Antibody) at a dilution of 1/45 (Cytoplasm).



Immunohistochemistry analysis of paraffin-embedded Human brain tissue using 218423 (Anti-CLU/APO J Antibody) at a dilution of 1/45.



Gel: 8%SDS-PAGE, Lysate: 40 µg;
Lane: Human fetal brain tissue lysate;
Primary antibody: 218423 (CLU/APO J Antibody) at dilution 1/400;
Secondary antibody: Goat anti rabbit IgG at 1/8000 dilution;
Exposure time: 30 seconds