

CLPX RABBIT MAB

货号: N263274

产品全名: CLPX 兔单克隆抗体

基因符号 ATP-dependent Clp protease ATP-binding subunit clpX-like; mitochondrial; CLPX

UNIPROT ID: O76031

背景: ATP-dependent specificity component of the Clp protease complex.

抗原: A synthetic peptide of human CLPX

经过测试的应用: WB, ICC/IF

推荐稀释比: WB: 1/500-1/1000 IF: 1/50-1/200

种属反应性: Rabbit

克隆性: Rabbit Monoclonal

克隆编号: R05-2A6

分子量: Calculated MW: 69 kDa; Observed MW: 69 kDa

亚型: IgG

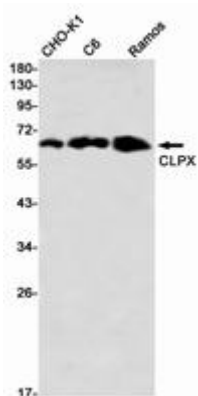
纯化: Affinity Purified

种属反应性: Human, Mouse and Rat, Hamster

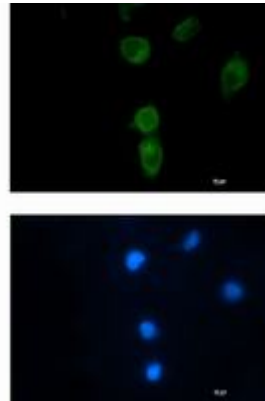
成分: PBS (without Mg²⁺ and Ca²⁺), pH 7.3 containing 50% glycerol, 0.5% BSA and 0.02% sodium azide

研究领域: -

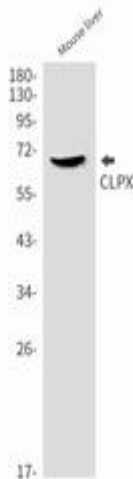
储存和运输: Store at -20°C. Avoid repeated freezing and thawing



Western blot analysis of CLPX in CHO-K1, C6, Ramos lysates using CLPX antibody



Immunocytochemistry analysis of CLPX (green) in HT-1080 using CLPX antibody, and DAPI (blue).



Western blot analysis of CLPX in mouse liver lysates using CLPX antibody.