

CLPTM1 RABBIT MAB

货号: N262047

产品全名: CLPTM1 兔单克隆抗体

基因符号 Cleft lip and palate transmembrane protein 1

UNIPROT ID: O96005

背景: May play a role in T-cell development.

抗原: A synthetic peptide of human CLPTM1

经过测试的应用: WB,IP

推荐稀释比: WB: 1/500-1/1000 IP: 1/20

种属反应性: Rabbit

克隆性: Rabbit Monoclonal

克隆编号: R05-316

分子量: Calculated MW: 76 kDa; Observed MW: 90 kDa

亚型: IgG

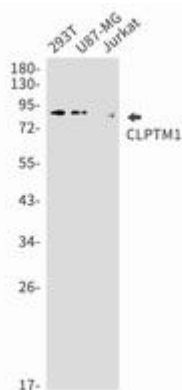
纯化: Affinity Purified

种属反应性: Human

成分: PBS (without Mg²⁺ and Ca²⁺), pH 7.3 containing 50% glycerol, 0.5% BSA and 0.02% sodium azide

研究领域: Cell Biology

储存和运输: Store at -20°C. Avoid repeated freezing and thawing



Western blot analysis of CLPTM1 in 293T, U87-MG, Jurkat lysates using CLPTM1 antibody.