

## CLIP170 RABBIT MAB

货号: N263273

产品全名: CLIP170 兔单克隆抗体

基因符号 RSN; CLIP; CYLN1; CLIP170; CLIP-170

**UNIPROT ID:** P30622

背景: Binds to the plus end of microtubules and regulates the dynamics of the microtubule cytoskeleton.

抗原: A synthetic peptide of human CLIP170

经过测试的应用: WB,IHC-F,IHC-P,ICC/IF,IP

推荐稀释比: WB: 1/500-1/1000 IHC: 1/50-1/100 IF: 1/50-1/200 IP: 1/20

种属反应性: Rabbit

克隆性: Rabbit Monoclonal

克隆编号: R07-1F3

分子量: Calculated MW: 162 kDa; Observed MW: 170 kDa

亚型: IgG

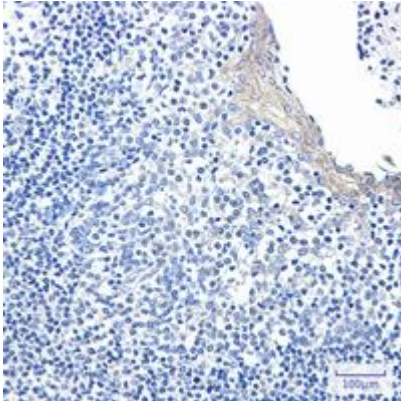
纯化: Affinity Purified

种属反应性: Human

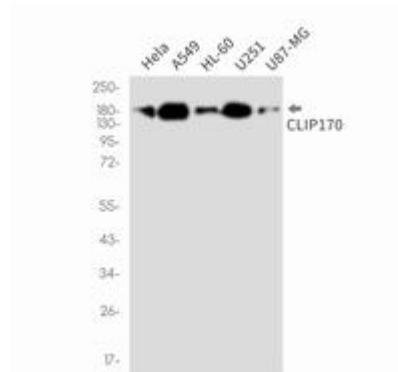
成分: PBS (without Mg<sup>2+</sup> and Ca<sup>2+</sup>), pH 7.3 containing 50% glycerol, 0.5% BSA and 0.02% sodium azide

研究领域: Cell Biology

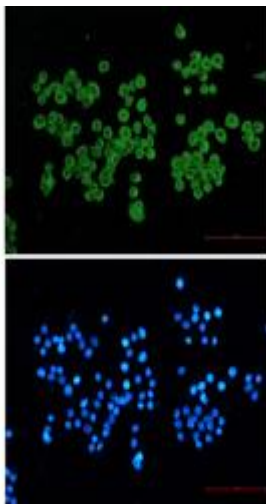
储存和运输: Store at -20°C. Avoid repeated freezing and thawing



Immunohistochemistry analysis of paraffin-embedded Human tonsil using CLIP170 antibody. High-pressure and temperature Sodium Citrate pH 6.0 was used for antigen retrieval.



Western blot analysis of CLIP170 in HeLa, A549, HL-60, U251, U87-MG lysates using CLIP170 antibody.



Immunocytochemistry analysis of CLIP17 (green) in HeLa cells using CLIP170 antibody, and DAPI (blue)