

CLIC2 RABBIT PAB

货号: S218508

产品全名: CLIC2 兔多抗

基因符号: CLCNL2; CLIC2b; MRXS32; XAPI21

UNIPROT ID: O15247 (Gene Accession - BC022305)

背景: This gene encodes a chloride intracellular channel protein. Chloride channels are a diverse group of proteins that regulate fundamental cellular processes including stabilization of cell membrane potential, transepithelial transport, maintenance of intracellular pH, and regulation of cell volume. This protein plays a role in inhibiting the function of ryanodine receptor 2. A mutation in this gene is the cause of an X-linked form of cognitive disability.

抗原: Fusion protein of human CLIC2

经过测试的应用: ELISA, IHC

推荐稀释比: IHC: 200-400; ELISA: 5000-10000

种属反应性: Rabbit

克隆性: Rabbit Polyclonal

亚型: Immunogen-specific rabbit IgG

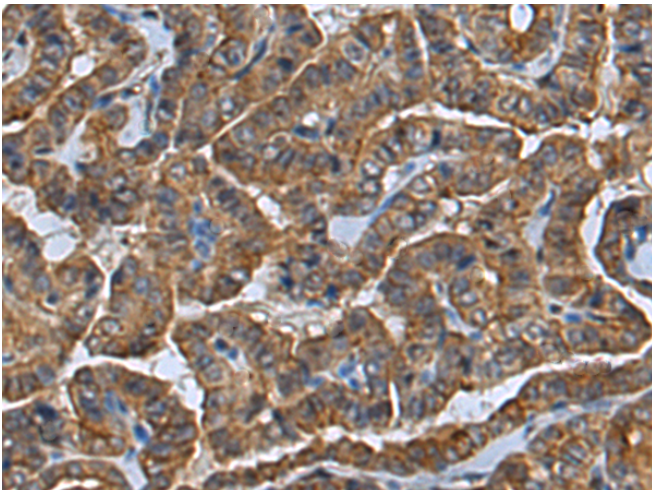
纯化: Antigen affinity purification

种属反应性: Human, Rat

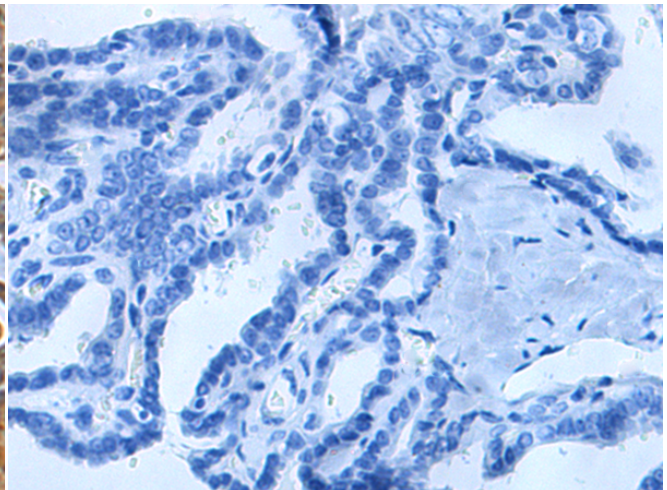
成分: PBS (without Mg²⁺ and Ca²⁺), pH 7.4, 150 mM NaCl, 0.05% Sodium Azide and 40% glycerol

研究领域: Metabolism, Signal Transduction

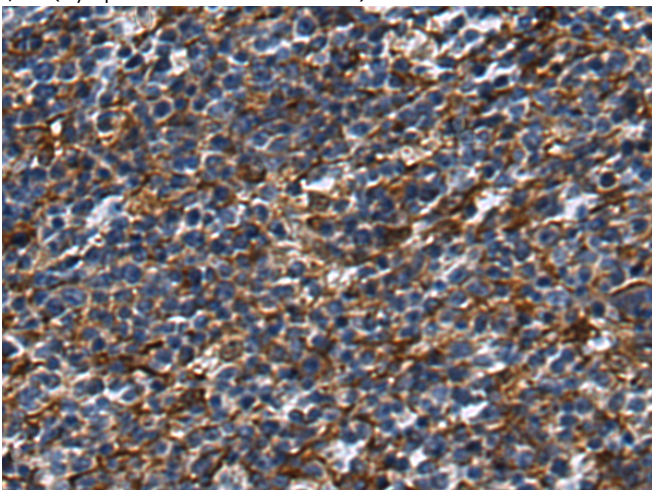
储存和运输: Store at -20°C. Avoid repeated freezing and thawing



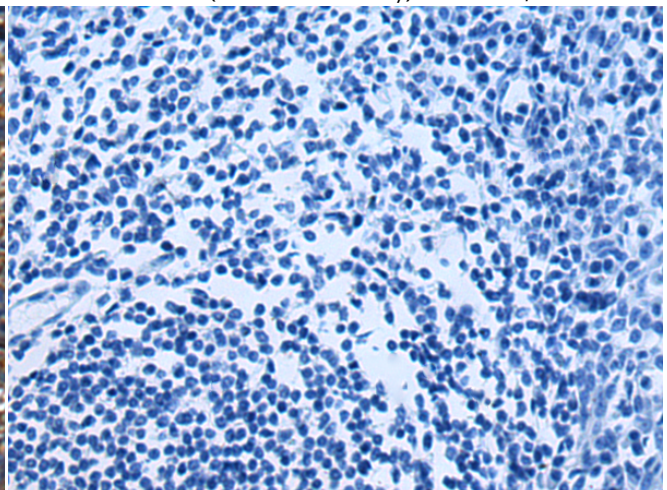
Immunohistochemistry analysis of paraffin embedded Human thyroid cancer tissue using 218508 (CLIC2 Antibody) at a dilution of 1/240 (Cytoplasm and Cell membrane).



In comparison with the IHC on the left, the same paraffin-embedded Human thyroid cancer tissue is first treated with the fusion protein and then with 218508 (Anti-CLIC2 Antibody) at dilution 1/240.



The image on the left is immunohistochemistry of paraffin-embedded Human tonsil tissue using 218508 (Anti-CLIC2 Antibody) at a dilution of 1/240.



In comparison with the IHC on the left, the same paraffin-embedded Human tonsil tissue is first treated with fusion protein and then with D224579 (Anti-CLIC2 Antibody) at dilution 1/240.



Product Description

Pioneering GTPase and Oncogene Product Development since 2010
