

CLIC1 RABBIT MAB

货号: N263272

产品全名: CLIC1 兔单克隆抗体

基因符号 Chloride intracellular channel protein 1; Chloride channel ABP; Nuclear chloride ion channel 27; NCC27; Regulatory nuclear chloride ion channel protein; hRNCC

UNIPROT ID: O00299

背景: Can insert into membranes and form chloride ion channels.

抗原: Recombinant protein of human CLIC1

经过测试的应用: WB, ICC/IF, IP

推荐稀释比: WB: 1/500-1/1000 IF: 1/50-1/200 IP: 1/20

种属反应性: Rabbit

克隆性: Rabbit Monoclonal

克隆编号: R08-4A2

分子量: Calculated MW: 27 kDa; Observed MW: 27 kDa

亚型: IgG

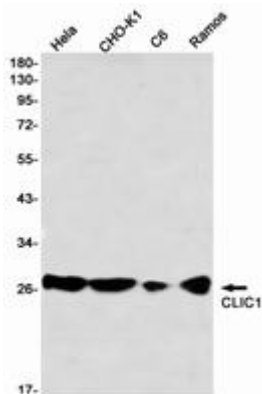
纯化: Affinity Purified

种属反应性: Human, Mouse and Rat, Hamster

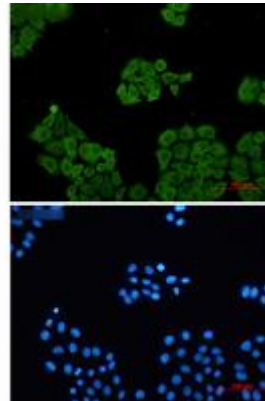
成分: PBS (without Mg²⁺ and Ca²⁺), pH 7.3 containing 50% glycerol, 0.5% BSA and 0.02% sodium azide

研究领域: Signal Transduction

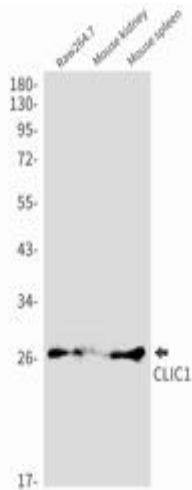
储存和运输: Store at -20°C. Avoid repeated freezing and thawing



Western blot analysis of CLIC1 in HeLa, CHO-K1, C6, Ramos lysates using CLIC1 antibody



Immunocytochemistry analysis of CLIC1 (green) in HeLa using CLIC1 antibody, and DAPI (blue).



Western blot analysis of CLIC1 in Raw264.7, mouse kidney, mouse spleen lysates using CLIC1 antibody.