

CLEC4C RABBIT PAB

货号: S220153

产品全名: CLEC4C 兔多抗

基因符号: DLEC, HECL, BDCA2, CD303, CLECSF7, CLECSF11, PRO34150

UNIPROT ID: Q8WTT0 (Gene Accession - NP_569708)

背景: This gene encodes a member of the C-type lectin/C-type lectin-like domain (CTL/CTLD) superfamily. Members of this family share a common protein fold and have diverse functions, such as cell adhesion, cell-cell signalling, glycoprotein turnover, and roles in inflammation and immune response. The encoded type 2 transmembrane protein may play a role in dendritic cell function. Two transcript variants encoding distinct isoforms have been identified for this gene.

抗原: Synthetic peptide of human CLEC4C

经过测试的应用: ELISA, IHC

推荐稀释比: IHC: 50-100; ELISA: 2000-10000

种属反应性: Rabbit

克隆性: Rabbit Polyclonal

亚型: Immunogen-specific rabbit IgG

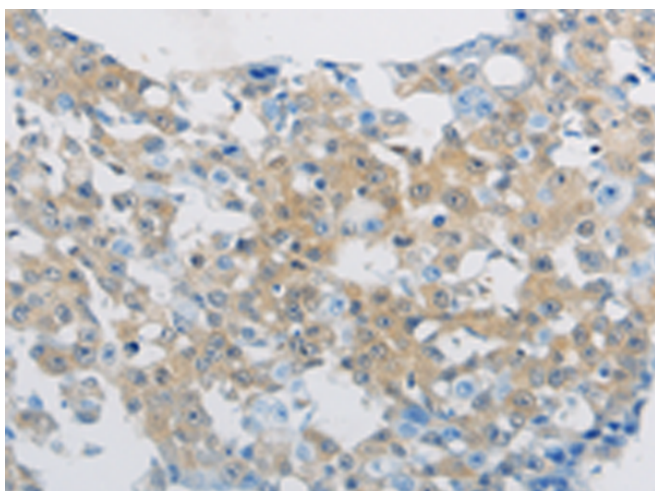
纯化: Antigen affinity purification

种属反应性: Human

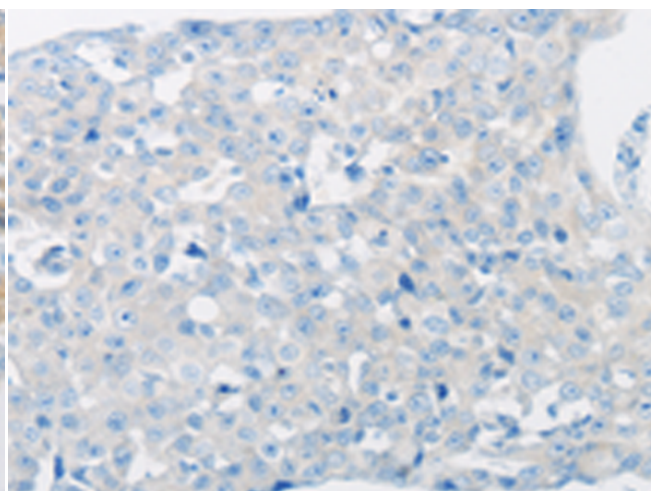
成分: PBS (without Mg²⁺ and Ca²⁺), pH 7.4, 150 mM NaCl, 0.05% Sodium Azide and 40% glycerol

研究领域: Immunology

储存和运输: Store at -20°C. Avoid repeated freezing and thawing



Immunohistochemistry analysis of paraffin embedded Human breast cancer tissue using 220153 (CLEC4C Antibody) at a dilution of 1/70 (Cytoplasm).



In comparison with the IHC on the left, the same paraffin-embedded Human breast cancer tissue is first treated with the synthetic peptide and then with 220153 (Anti-CLEC4C Antibody) at dilution 1/70.