

## CLEC3B RABBIT PAB

货号: S218831

产品全名: CLEC3B 兔多抗

基因符号 TN; TNA

**UNIPROT ID:** P05452 (Gene Accession - BC011024)

背景: Tetranectin binds to plasminogen and to isolated kringle 4. May be involved in the packaging of molecules destined for exocytosis.

抗原: Fusion protein of human CLEC3B

经过测试的应用: ELISA, WB, IHC

推荐稀释比: IHC: 40-200;WB: 500-2000;ELISA: 5000-10000

种属反应性: Rabbit

克隆性: Rabbit Polyclonal

亚型: Immunogen-specific rabbit IgG

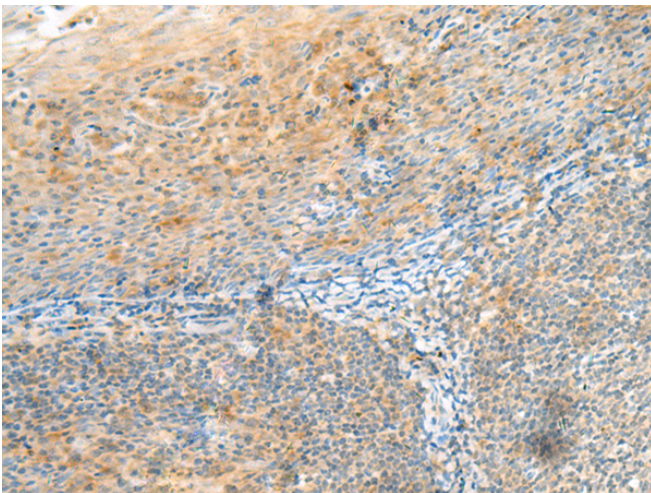
纯化: Antigen affinity purification

种属反应性: Human, Mouse, Rat

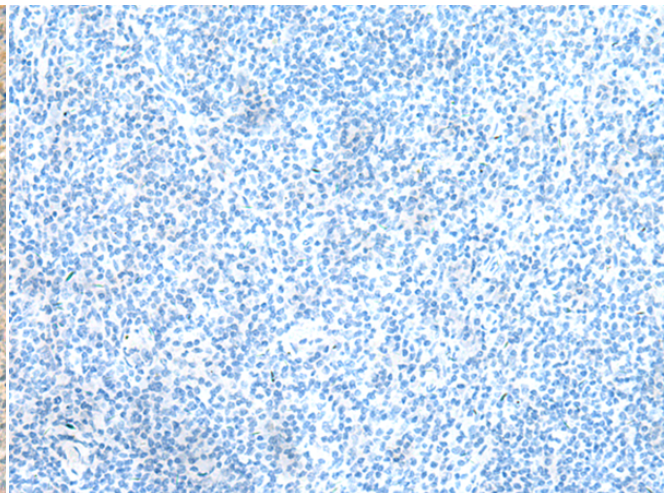
成分: PBS (without Mg<sup>2+</sup> and Ca<sup>2+</sup>), pH 7.4, 150 mM NaCl, 0.05% Sodium Azide and 40% glycerol

研究领域: Signal Transduction, Cardiovascular

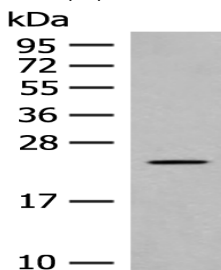
储存和运输: Store at -20°C. Avoid repeated freezing and thawing



Immunohistochemistry analysis of paraffin embedded Human tonsil tissue using 218831(CLEC3B Antibody) at a dilution of 1/90(Cytoplasm).



In comparison with the IHC on the left, the same paraffin-embedded Human tonsil tissue is first treated with the fusion protein and then with 218831(Anti-CLEC3B Antibody) at dilution 1/90.



Gel: 12%SDS-PAGE, Lysate: 40 µg;

Lane: Rat heart tissue lysate;

Primary antibody: 218831(CLEC3B Antibody) at dilution 1/650;

Secondary antibody: Goat anti rabbit IgG at 1/8000 dilution;

Exposure time: 30 seconds