

## CLEC2A RABBIT PAB

货号: S219705

产品全名: CLEC2A 兔多抗

基因符号: KACL; PILAR; UNQ5792; INPE5792

**UNIPROT ID:** Q6UVW9 (Gene Accession - NP\_001124183.1)

**背景:** CLEC2A belongs to the CLEC2 family of activation-induced, natural killer gene complex-encoded C-type lectin-like receptors (Spreu et al., 2007 [PubMed 18046548]). [supplied by OMIM, May 2008]

**抗原:** Synthetic peptide of human CLEC2A

**经过测试的应用:** ELISA, IHC

**推荐稀释比:** IHC: 50-100; ELISA: 5000-10000

**种属反应性:** Rabbit

**克隆性:** Rabbit Polyclonal

**亚型:** Immunogen-specific rabbit IgG

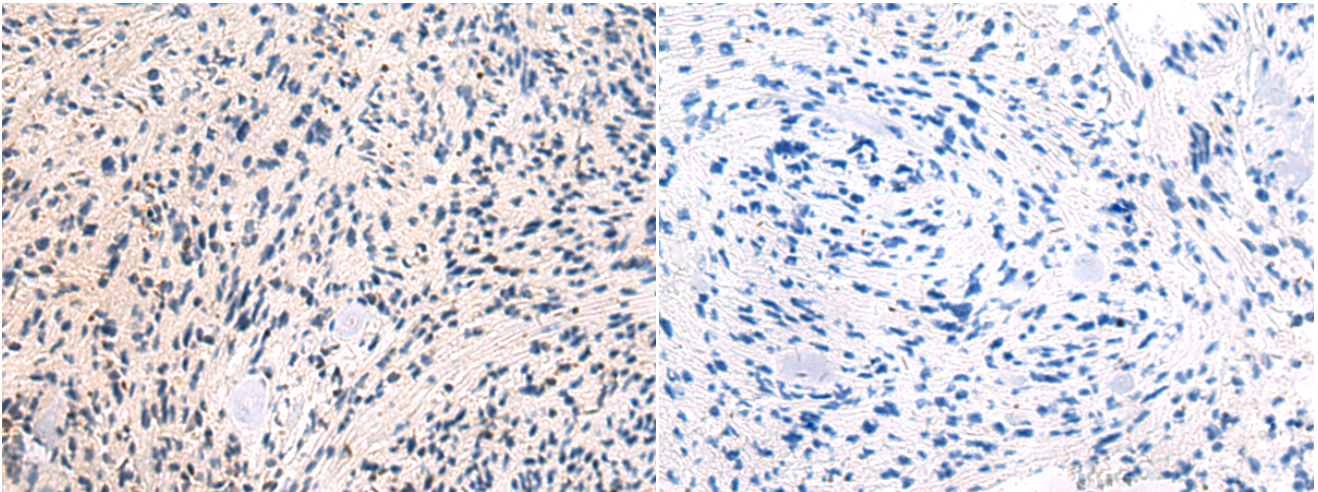
**纯化:** Antigen affinity purification

**种属反应性:** Human

**成分:** PBS (without Mg<sup>2+</sup> and Ca<sup>2+</sup>), pH 7.4, 150 mM NaCl, 0.05% Sodium Azide and 40% glycerol

**研究领域:** Immunology

**储存和运输:** Store at -20°C. Avoid repeated freezing and thawing



Immunohistochemistry analysis of paraffin embedded Human brain tissue using 219705(CLEC2A Antibody) at a dilution of 1/55(Cytoplasm).

In comparison with the IHC on the left, the same paraffin-embedded Human brain tissue is first treated with the synthetic peptide and then with 219705(Anti-CLEC2A Antibody) at dilution 1/55.