

CLEC16A RABBIT PAB

货号: S220750

产品全名: CLEC16A 兔多抗

基因符号: Gop-1; KIAA0350

UNIPROT ID: Q2KHT3 (Gene Accession - NP_056041)

背景: This gene encodes a member of the C-type lectin domain containing family. Single nucleotide polymorphisms in introns of this gene have been associated with diabetes mellitus, multiple sclerosis and rheumatoid arthritis. Multiple transcript variants encoding different isoforms have been found for this gene.

抗原: Synthetic peptide of human CLEC16A

经过测试的应用: ELISA, IHC

推荐稀释比: IHC: 50-200; ELISA: 2000-5000

种属反应性: Rabbit

克隆性: Rabbit Polyclonal

亚型: Immunogen-specific rabbit IgG

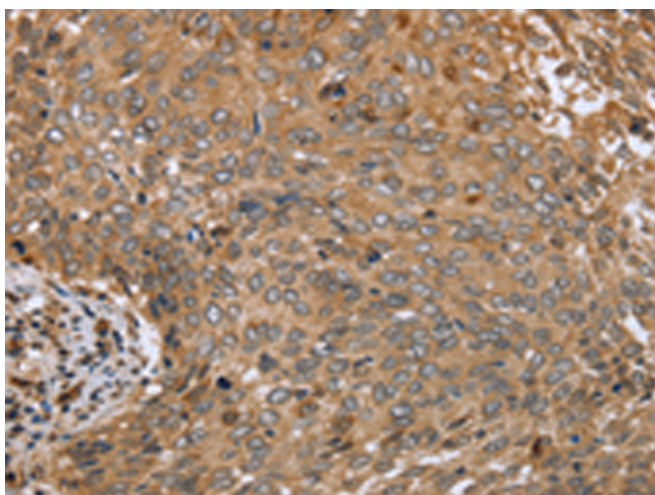
纯化: Antigen affinity purification

种属反应性: Human

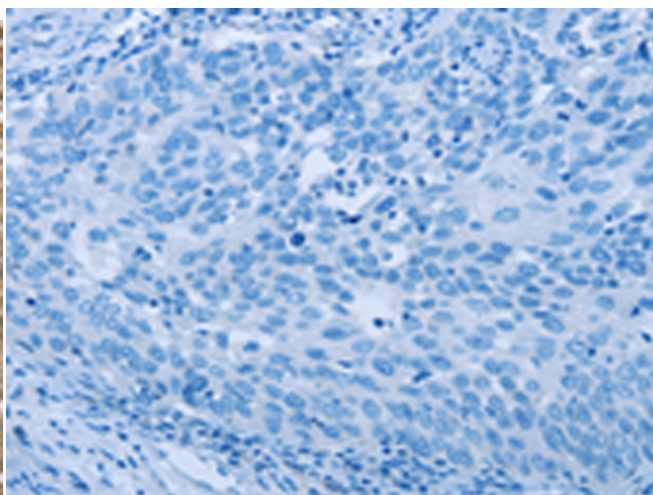
成分: PBS (without Mg²⁺ and Ca²⁺), pH 7.4, 150 mM NaCl, 0.05% Sodium Azide and 40% glycerol

研究领域: Immunology

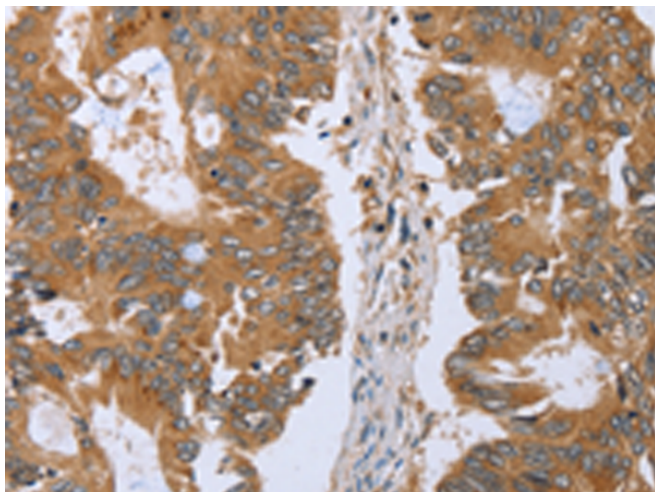
储存和运输: Store at -20°C. Avoid repeated freezing and thawing



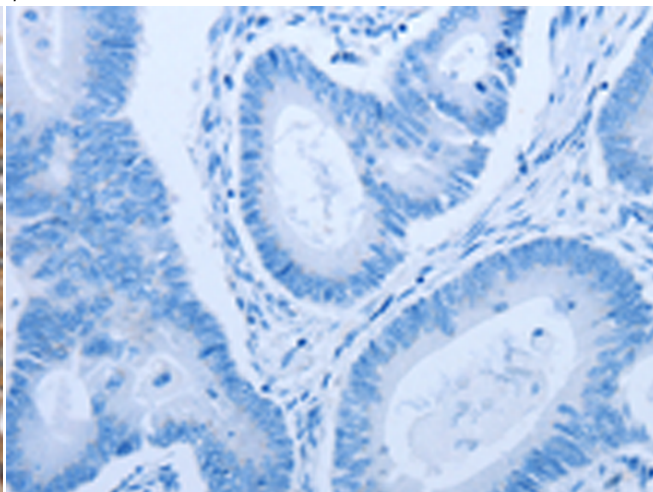
Immunohistochemistry analysis of paraffin embedded Human cervical cancer tissue using 220750(CLEC16A Antibody) at a dilution of 1/45(Cytoplasm).



In comparison with the IHC on the left, the same paraffin-embedded Human cervical cancer tissue is first treated with the synthetic peptide and then with 220750(Anti-CLEC16A Antibody) at dilution 1/45.



The image on the left is immunohistochemistry of paraffin-embedded Human colon cancer tissue using 220750(Anti-CLEC16A Antibody) at a dilution of 1/45.



In comparison with the IHC on the left, the same paraffin-embedded Human colon cancer tissue is first treated with synthetic peptide and then with D261959(Anti-CLEC16A Antibody) at dilution 1/45.



Product Description

Pioneering GTPase and Oncogene Product Development since 2010
