

## CLEAVED-CASPASE 9 RABBIT PAB

货号: N225350

产品全名: Cleaved-Caspase 9 兔多抗

基因符号 CASP9; MCH6; Caspase-9; CASP-9; Apoptotic protease Mch-6; Apoptotic protease-activating factor 3; APAF-3; ICE-like apoptotic protease 6; ICE-LAP6

**UNIPROT ID:** Q9JHK1

**背景:** Involved in the activation cascade of caspases responsible for apoptosis execution. Binding of caspase-9 to Apaf-1 leads to activation of the protease which then cleaves and activates caspase-3.

**抗原:** The antiserum was produced against synthesized peptide derived from rat Caspase 9. AA range:323-372

**经过测试的应用:** ICC/IF, WB, IHC-F, IHC-P, ELISA

**推荐稀释比:** WB: 1/500-1/1000 IHC: 1/50-1/100 IF: 1/50-1/200 ELISA: 1/10000

**种属反应性:** Rabbit

**克隆性:** Rabbit Polyclonal

**分子量:** Calculated MW: 50,17 kDa; Observed MW: 17 kDa

**亚型:** IgG

**纯化:** Affinity Purified

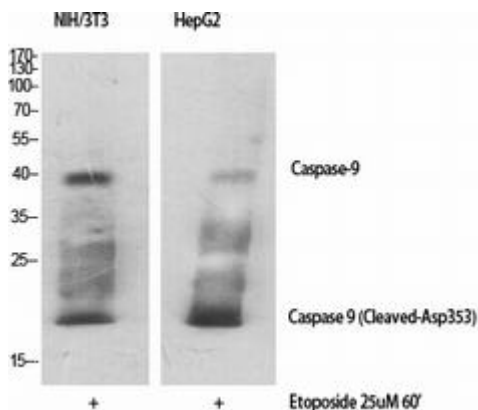
**种属反应性:** Mouse, Rat

**Modification:** Cleaved

**成分:** PBS (without Mg<sup>2+</sup> and Ca<sup>2+</sup>), pH 7.3 containing 50% glycerol, 0.5% BSA and 0.02% sodium azide

**研究领域:** Cell Biology

**储存和运输:** Store at -20°C. Avoid repeated freezing and thawing



Western blot analysis of Cleaved-Caspase 9 in various lysates using Cleaved-Caspase 9 antibody.



# Product Description

Pioneering GTPase and Oncogene Product Development since 2010

---