

CLEAVED-CASPASE 4/5 P20 RABBIT PAB

货号: N225494

产品全名: Cleaved-Caspase 4/5 p20 兔多抗

基因符号 TX; Mih1; ICH-2; Mih1/TX; ICEREL-II; ICE(rel)II

UNIPROT ID: P49662/P51878

背景: CASP4 (caspase 4) encodes a protein that is a member of the cysteine-aspartic acid protease (caspase) family. Sequential activation of caspases plays a central role in the execution-phase of cell apoptosis. Caspases exist as inactive proenzymes composed of a prodomain and a large and small protease subunit. Activation of caspases requires proteolytic processing at conserved internal aspartic residues to generate a heterodimeric enzyme consisting of the large and small subunits. This caspase is able to cleave and activate its own precursor protein, as well as caspase 1 precursor. When overexpressed, caspase 4 induces cell apoptosis. Alternative splicing results in transcript variants encoding distinct isoforms.

抗原: The antiserum was produced against synthesized peptide derived from human Caspase 4/5. AA range:221-270

经过测试的应用: WB,ELISA

推荐稀释比: WB: 1/500-1/1000 ELISA: 1/10000

种属反应性: Rabbit

克隆性: Rabbit Polyclonal

分子量: Calculated MW: 43 kDa; Observed MW: 47,22 kDa

亚型: IgG

纯化: Affinity Chromatography

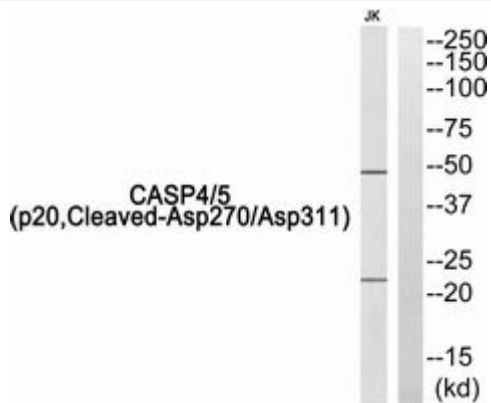
种属反应性: Human

Modification: Cleaved

成分: PBS (without Mg²⁺ and Ca²⁺), pH 7.3 containing 50% glycerol, 0.5% BSA and 0.02% sodium azide

研究领域: apoptosis - Caspase family

储存和运输: Store at -20°C. Avoid repeated freezing and thawing



Western blot analysis of Cleaved-Caspase 4/5 p20 in Jurkat lysates using Caspase 4/5 (p20, Cleaved-Asp270/Asp311) antibody. The lane on the right is blocked with the Caspase 4/5 (p20, Cleaved-Asp270/Asp311) peptide.