

## CLDND2 RABBIT PAB

货号: S221192

产品全名: CLDND2 兔多抗

基因符号

**UNIPROT ID:** Q8NHS1 (Gene Accession - NP\_689566 )

**背景:** CLDND2 (claudin domain containing 2) is a 167 amino acid multi-pass membrane protein that belongs to the PMP-22/EMP/MP20 family and is encoded by a gene that maps to human chromosome 19q13.33. Consisting of around 63 million bases with over 1,400 genes, chromosome 19 makes up over 2% of human genomic DNA. Chromosome 19 includes a diversity of interesting genes and is recognized for having the greatest gene density of the human chromosomes.

**抗原:** Synthetic peptide of human CLDND2

**经过测试的应用:** ELISA, WB, IHC

**推荐稀释比:** IHC: 30-150;WB: 500-2000;ELISA: 2000-5000

**种属反应性:** Rabbit

**克隆性:** Rabbit Polyclonal

**亚型:** Immunogen-specific rabbit IgG

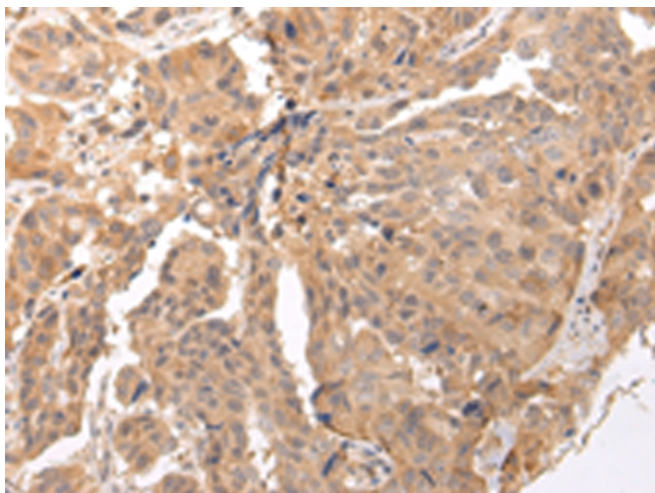
**纯化:** Antigen affinity purification

**种属反应性:** Human, Mouse

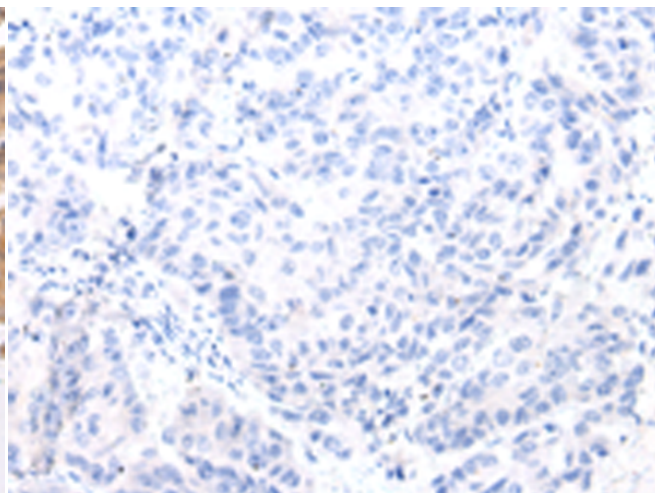
**成分:** PBS (without Mg<sup>2+</sup> and Ca<sup>2+</sup>), pH 7.4, 150 mM NaCl, 0.05% Sodium Azide and 40% glycerol

**研究领域:** Cell Biology

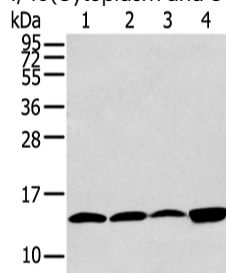
**储存和运输:** Store at -20°C. Avoid repeated freezing and thawing



Immunohistochemistry analysis of paraffin embedded Human breast cancer tissue using 221192 (CLDND2 Antibody) at a dilution of 1/45 (Cytoplasm and Cell membrane).



In comparison with the IHC on the left, the same paraffin-embedded Human breast cancer tissue is first treated with the synthetic peptide and then with 221192 (Anti-CLDND2 Antibody) at dilution 1/45.



Gel: 12% SDS-PAGE, Lysate: 40 µg;  
Lane 1-4: HeLa, 293T, PC3 and TM4 cell;  
Primary antibody: 221192 (CLDND2 Antibody) at dilution 1/400;  
Secondary antibody: Goat anti rabbit IgG at 1/8000 dilution;  
Exposure time: 30 seconds