

CLDND1 RABBIT PAB

货号: S216439

产品全名: CLDND1 兔多抗

基因符号 Z38; C3orf4; GENX-3745

UNIPROT ID: Q9NY35 (Gene Accession - BC001757)

背景: Located in cell surface. [provided by Alliance of Genome Resources, Apr 2022]

抗原: Fusion protein of human CLDND1

经过测试的应用: ELISA, IHC

推荐稀释比: IHC: 50-200; ELISA: 5000-10000

种属反应性: Rabbit

克隆性: Rabbit Polyclonal

亚型: Immunogen-specific rabbit IgG

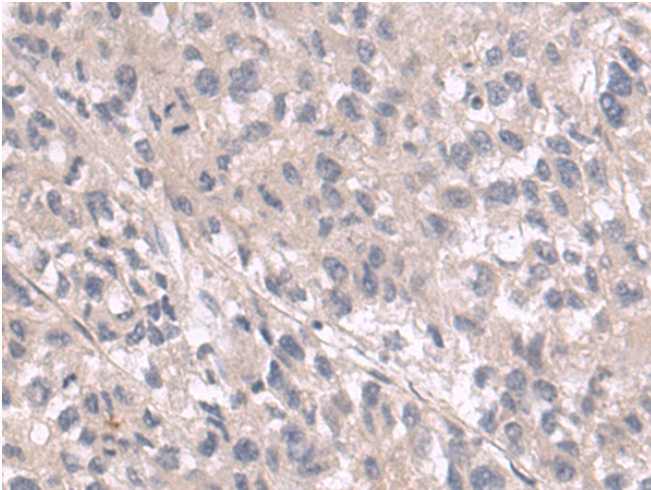
纯化: Antigen affinity purification

种属反应性: Human, Mouse

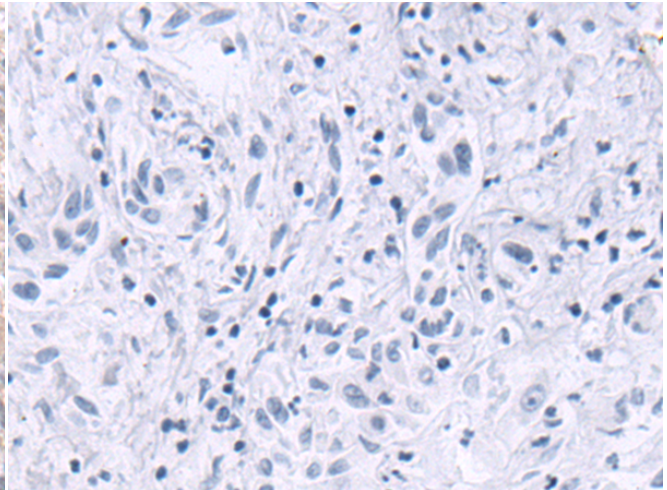
成分: PBS (without Mg²⁺ and Ca²⁺), pH 7.4, 150 mM NaCl, 0.05% Sodium Azide and 40% glycerol

研究领域: Cell Biology, Neuroscience

储存和运输: Store at -20°C. Avoid repeated freezing and thawing



Immunohistochemistry analysis of paraffin embedded Human liver cancer tissue using 216439 (CLDND1 Antibody) at a dilution of 1/70 (Cytoplasm and Cell membrane).



In comparison with the IHC on the left, the same paraffin-embedded Human liver cancer tissue is first treated with the fusion protein and then with 216439 (Anti-CLDND1 Antibody) at dilution 1/70.