

CLDND1 RABBIT PAB

货号: S219805

产品全名: CLDND1 兔多抗

基因符号 Z38; C3orf4; GENX-3745

UNIPROT ID: Q9NY35 (Gene Accession - NP_063948)

背景: Widely distributed in the adult CNS with highest expression in the corpus callosum, caudate nucleus, cerebral cortex, medulla, putamen, spinal cord, substantia nigra and subthalamic nucleus. Weak expression was detected in the adult heart.

抗原: Synthetic peptide of human CLDND1

经过测试的应用: ELISA, WB, IHC

推荐稀释比: IHC: 30-150; WB: 200-1000; ELISA: 5000-10000

种属反应性: Rabbit

克隆性: Rabbit Polyclonal

亚型: Immunogen-specific rabbit IgG

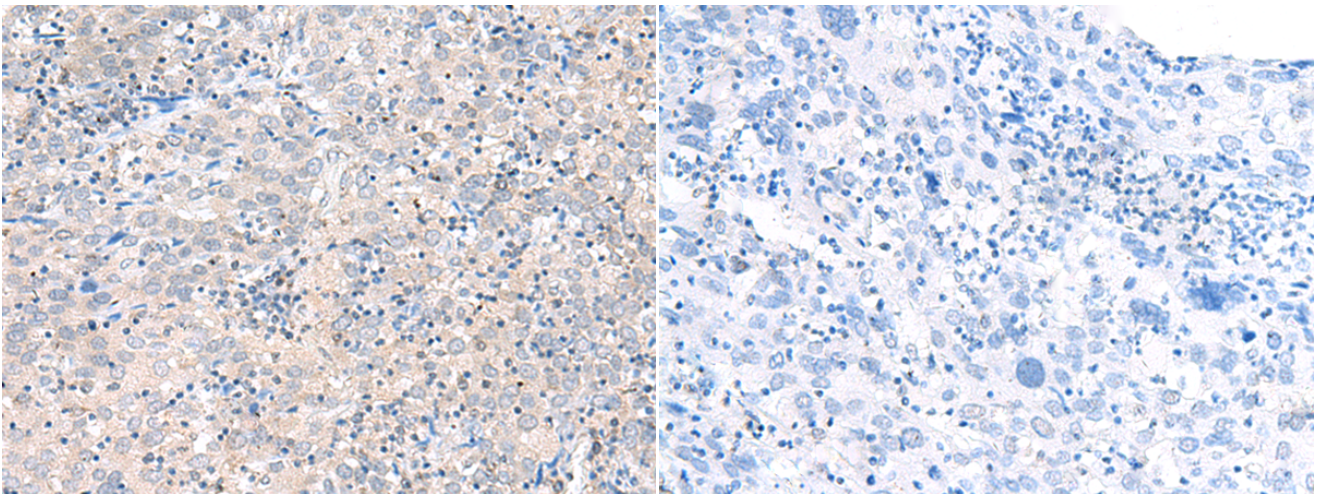
纯化: Antigen affinity purification

种属反应性: Human, Mouse

成分: PBS (without Mg²⁺ and Ca²⁺), pH 7.4, 150 mM NaCl, 0.05% Sodium Azide and 40% glycerol

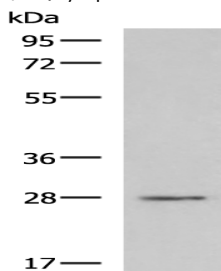
研究领域: Cell Biology, Neuroscience

储存和运输: Store at -20°C. Avoid repeated freezing and thawing



Immunohistochemistry analysis of paraffin embedded Human cervical cancer tissue using 219805 (CLDND1 Antibody) at a dilution of 1/35 (Cytoplasm and Cell membrane).

In comparison with the IHC on the left, the same paraffin-embedded Human cervical cancer tissue is first treated with the synthetic peptide and then with 219805 (Anti-CLDND1 Antibody) at dilution 1/35.



Gel: 8% SDS-PAGE, Lysate: 40 µg;

Lane: TM4 cell lysate;

Primary antibody: 219805 (CLDND1 Antibody) at dilution 1/500;

Secondary antibody: HRP-conjugated Goat anti rabbit IgG at 1/5000 dilution;

Exposure time: 2 minutes