

CLDN7 RABBIT PAB

货号: S219811

产品全名: CLDN7 兔多抗

基因符号: CLDN-7, CEPTRL2, CPETRL2, Hs.84359, claudin-1

UNIPROT ID: O95471 (Gene Accession - NP_001298)

背景: This gene encodes a member of the claudin family. Claudins are integral membrane proteins and components of tight junction strands. Tight junction strands serve as a physical barrier to prevent solutes and water from passing freely through the paracellular space between epithelial or endothelial cell sheets, and also play critical roles in maintaining cell polarity and signal transductions. Differential expression of this gene has been observed in different types of malignancies, including breast cancer, ovarian cancer, hepatocellular carcinomas, urinary tumors, prostate cancer, lung cancer, head and neck cancers, thyroid carcinomas, etc.. Alternatively spliced transcript variants encoding different isoforms have been found.

抗原: Synthetic peptide of human CLDN7

经过测试的应用: ELISA, WB, IHC

推荐稀释比: IHC: 50-150;WB: 1000-3000;ELISA: 1000-10000

种属反应性: Rabbit

克隆性: Rabbit Polyclonal

亚型: Immunogen-specific rabbit IgG

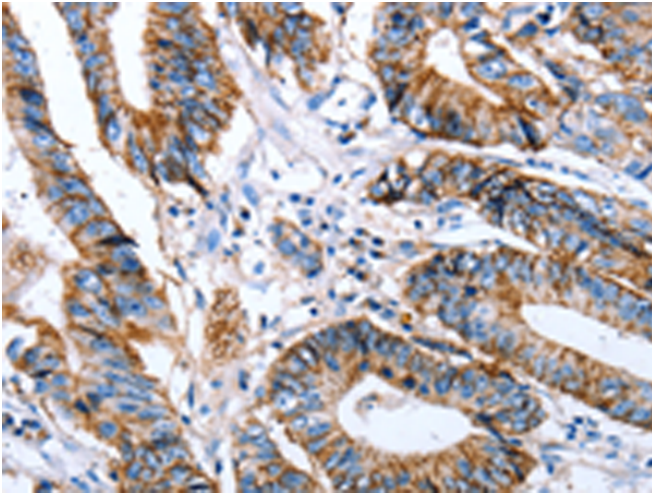
纯化: Antigen affinity purification

种属反应性: Human, Mouse, Rat

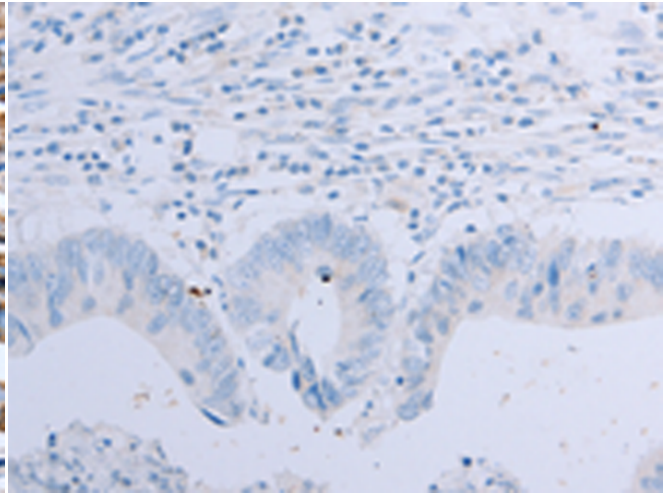
成分: PBS (without Mg²⁺ and Ca²⁺), pH 7.4, 150 mM NaCl, 0.05% Sodium Azide and 40% glycerol

研究领域: Signal Transduction

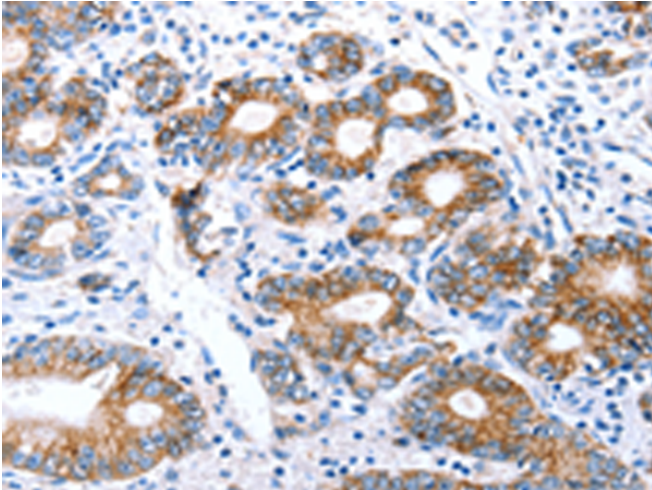
储存和运输: Store at -20°C. Avoid repeated freezing and thawing



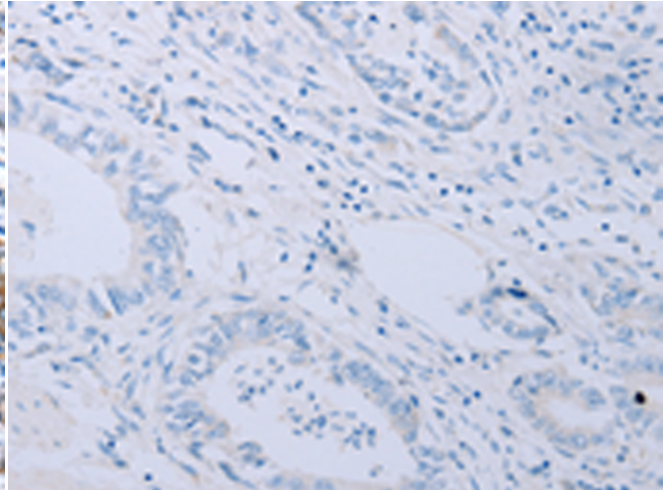
Immunohistochemistry analysis of paraffin embedded Human colon cancer tissue using 219811 (CLDN7 Antibody) at a dilution of 1/50 (Cytoplasm, Cell membrane).



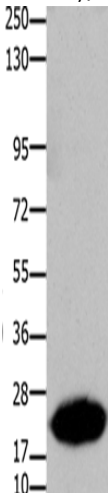
In comparison with the IHC on the left, the same paraffin-embedded Human colon cancer tissue is first treated with the synthetic peptide and then with 219811 (Anti-CLDN7 Antibody) at dilution 1/50.



The image on the left is immunohistochemistry of paraffin-embedded Human stomach cancer tissue using 219811 (Anti-CLDN7 Antibody) at a dilution of 1/50.



In comparison with the IHC on the left, the same paraffin-embedded Human stomach cancer tissue is first treated with synthetic peptide and then with D260406 (Anti-CLDN7 Antibody) at dilution 1/50.



Gel: 10% SDS-PAGE, Lysate: 30 μ g;
Lane: Human liver cancer tissue;
Primary antibody: 219811 (CLDN7 Antibody) at dilution 1/1050;
Secondary antibody: Goat anti rabbit IgG at 1/8000 dilution;
Exposure time: 40 seconds



Product Description

Pioneering GTPase and Oncogene Product Development since 2010
