

CLDN5 RABBIT PAB

货号: S219709

产品全名: CLDN5 兔多抗

基因符号: AWAL, BEC1, TMVCF, CPETRL1

UNIPROT ID: O00501 (Gene Accession - NP_001124333)

背景: This gene encodes a member of the claudin family. Claudins are integral membrane proteins and components of tight junction strands. Tight junction strands serve as a physical barrier to prevent solutes and water from passing freely through the paracellular space between epithelial or endothelial cell sheets. Mutations in this gene have been found in patients with velocardiofacial syndrome. Alternatively spliced transcript variants encoding the same protein have been found for this gene

抗原: Synthetic peptide of human CLDN5

经过测试的应用: ELISA, IHC

推荐稀释比: IHC: Oct-50; ELISA: 1000-2000

种属反应性: Rabbit

克隆性: Rabbit Polyclonal

亚型: Immunogen-specific rabbit IgG

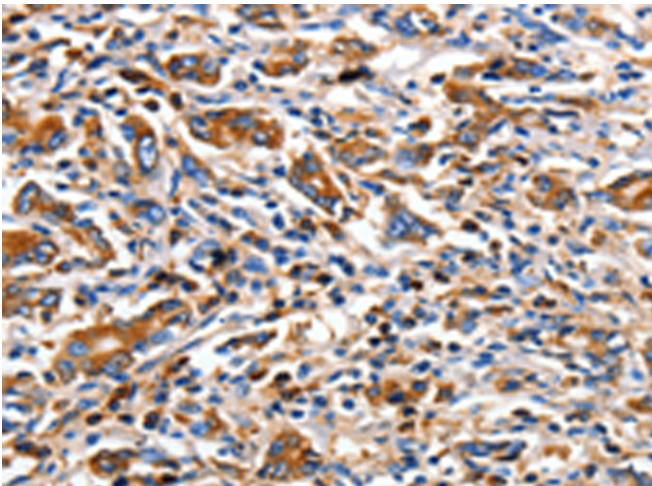
纯化: Antigen affinity purification

种属反应性: Human, Mouse, Rat

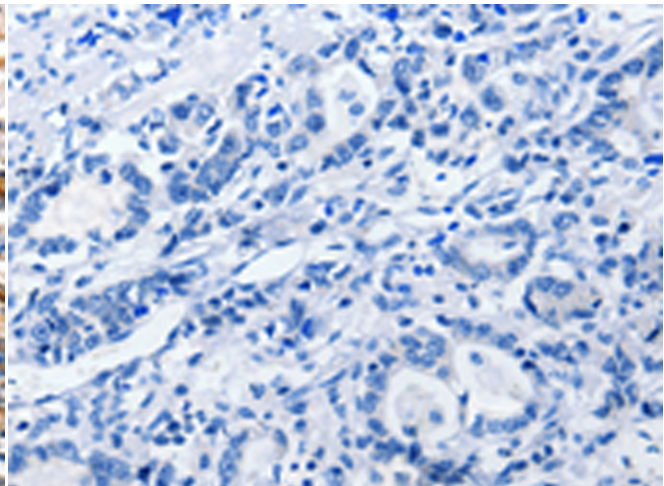
成分: PBS (without Mg²⁺ and Ca²⁺), pH 7.4, 150 mM NaCl, 0.05% Sodium Azide and 40% glycerol

研究领域: Signal Transduction

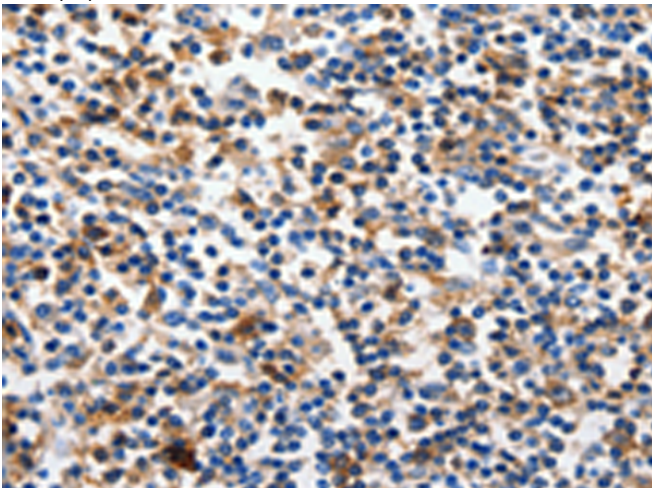
储存和运输: Store at -20°C. Avoid repeated freezing and thawing



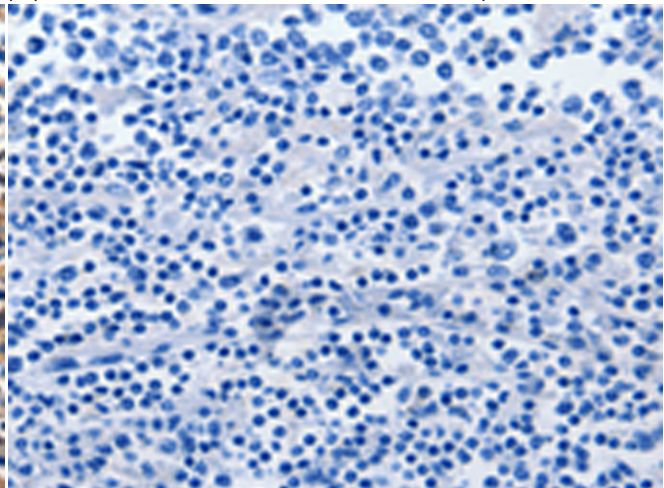
Immunohistochemistry analysis of paraffin embedded Human gastric cancer tissue using 219709 (CLDN5 Antibody) at a dilution of 1/10 (Cytoplasm).



In comparison with the IHC on the left, the same paraffin-embedded Human gastric cancer tissue is first treated with the synthetic peptide and then with 219709 (Anti-CLDN5 Antibody) at dilution 1/10.



The image on the left is immunohistochemistry of paraffin-embedded Human tonsil tissue using 219709 (Anti-CLDN5 Antibody) at a dilution of 1/10.



In comparison with the IHC on the left, the same paraffin-embedded Human tonsil tissue is first treated with synthetic peptide and then with D260192 (Anti-CLDN5 Antibody) at dilution 1/10.



Product Description

Pioneering GTPase and Oncogene Product Development since 2010
