

CLDN4 RABBIT PAB

货号: S219807

产品全名: CLDN4 兔多抗

基因符号: CPER, CPE-R, CPETR, CPETRI, WBSCR8, hCPE-R

UNIPROT ID: O14493 (Gene Accession - NP_001296)

背景: Claudin 4, also known as CLDN4, is a protein which in humans is encoded by the CLDN4 gene. It belongs to the group of claudins. This gene encodes an integral membrane protein, which belongs to the claudin family. The protein is a component of tight junction strands and may play a role in internal organ development and function during pre- and postnatal life. This gene is deleted in Williams-Beuren syndrome, a neurodevelopmental disorder affecting multiple systems.

抗原: Synthetic peptide of human CLDN4

经过测试的应用: ELISA, WB, IHC

推荐稀释比: IHC: 25-100;WB: 1000-3000;ELISA: 1000-10000

种属反应性: Rabbit

克隆性: Rabbit Polyclonal

亚型: Immunogen-specific rabbit IgG

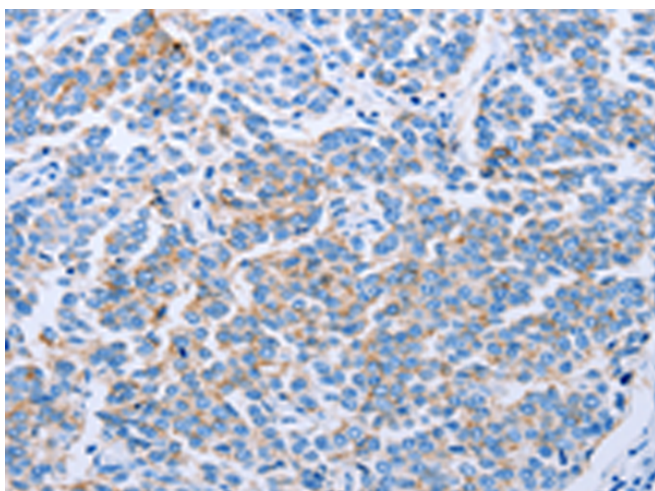
纯化: Antigen affinity purification

种属反应性: Human, Mouse

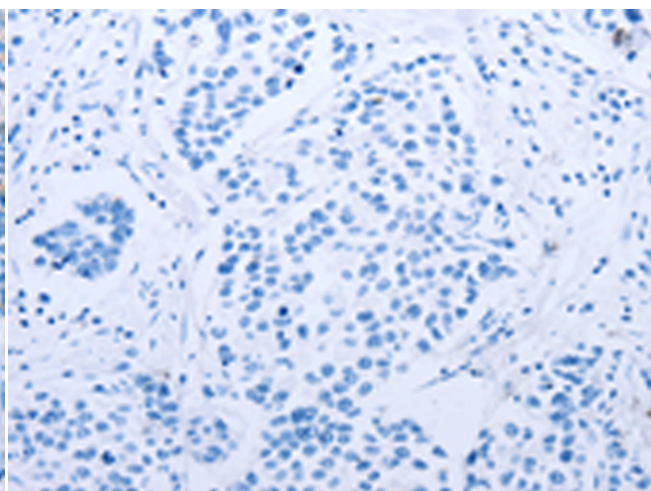
成分: PBS (without Mg²⁺ and Ca²⁺), pH 7.4, 150 mM NaCl, 0.05% Sodium Azide and 40% glycerol

研究领域: Signal Transduction

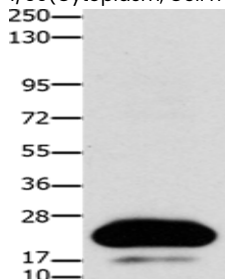
储存和运输: Store at -20°C. Avoid repeated freezing and thawing



Immunohistochemistry analysis of paraffin embedded Human breast cancer tissue using 219807 (CLDN4 Antibody) at a dilution of 1/50 (Cytoplasm, Cell membrane).



In comparison with the IHC on the left, the same paraffin-embedded Human breast cancer tissue is first treated with the synthetic peptide and then with 219807 (Anti-CLDN4 Antibody) at dilution 1/50.



Gel: 10+12%SDS-PAGE, Lysate: 30 µg;

Lane: HT29 cells;

Primary antibody: 219807 (CLDN4 Antibody) at dilution 1/1100;

Secondary antibody: Goat anti rabbit IgG at 1/8000 dilution;

Exposure time: 30 seconds