

CLCNKA RABBIT PAB

货号: S221746

产品全名: CLCNKA 兔多抗

基因符号: CLCK1; CIC-K1; hCIC-Ka

UNIPROT ID: P51800 (Gene Accession - NP_004061)

背景: This gene is a member of the CLC family of voltage-gated chloride channels. The encoded protein is predicted to have 12 transmembrane domains, and requires a beta subunit called barttin to form a functional channel. It is thought to function in salt reabsorption in the kidney and potassium recycling in the inner ear. The gene is highly similar to CLCNKB, which is located 10 kb downstream from this gene. Multiple transcript variants encoding different isoforms have been found for this gene.

抗原: Synthetic peptide of human CLCNKA

经过测试的应用: ELISA, IHC

推荐稀释比: IHC: 20-100; ELISA: 2000-5000

种属反应性: Rabbit

克隆性: Rabbit Polyclonal

亚型: Immunogen-specific rabbit IgG

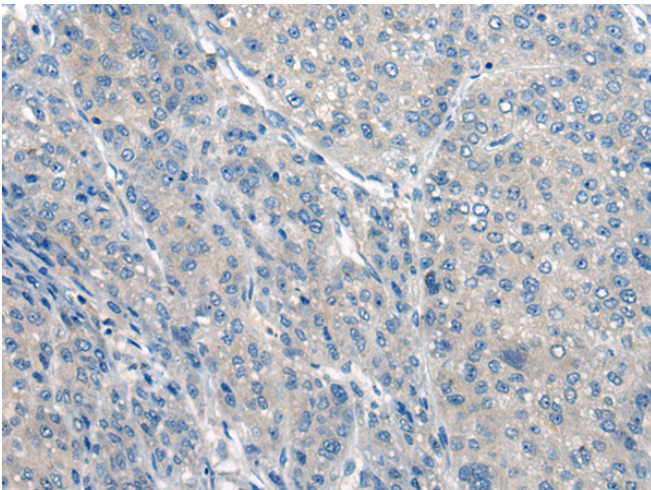
纯化: Antigen affinity purification

种属反应性: Human, Mouse

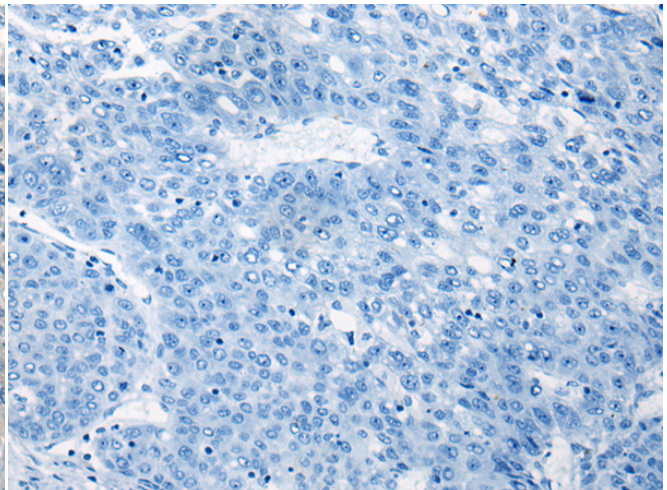
成分: PBS (without Mg²⁺ and Ca²⁺), pH 7.4, 150 mM NaCl, 0.05% Sodium Azide and 40% glycerol

研究领域: Metabolism, Neuroscience

储存和运输: Store at -20°C. Avoid repeated freezing and thawing



Immunohistochemistry analysis of paraffin embedded Human liver cancer tissue using 221746 (CLCNKA Antibody) at a dilution of 1/20 (Cell membrane).



In comparison with the IHC on the left, the same paraffin-embedded Human liver cancer tissue is first treated with the synthetic peptide and then with 221746 (Anti-CLCNKA Antibody) at dilution 1/20.