

CLAUDIN 5 RABBIT PAB

货号: N225438

产品全名: Claudin 5 兔多抗

基因符号 CLDN5; AWAL; TMVCF; Claudin-5; Transmembrane protein deleted in VCFS; TMDVCF

UNIPROT ID: O00501

背景: Plays a major role in tight junction-specific obliteration of the intercellular space.

抗原: The antiserum was produced against synthesized peptide derived from human Claudin 5. AA range:169-218

经过测试的应用: WB,IHC-F,IHC-P,ICC/IF,ELISA

推荐稀释比: WB: 1/500-1/1000 IHC: 1/50-1/100 IF: 1/50-1/200 ELISA: 1/10000

种属反应性: Rabbit

克隆性: Rabbit Polyclonal

分子量: Calculated MW: 23 kDa; Observed MW: 23 kDa

亚型: IgG

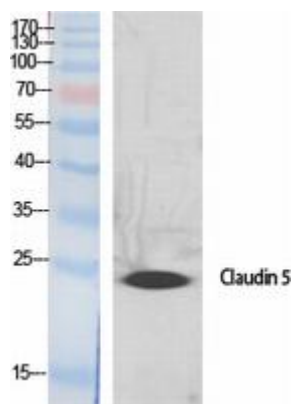
纯化: Affinity Purified

种属反应性: Human,Mouse

成分: PBS (without Mg²⁺ and Ca²⁺), pH 7.3 containing 50% glycerol, 0.5% BSA and 0.02% sodium azide

研究领域: Cell Biology

储存和运输: Store at -20°C. Avoid repeated freezing and thawing



Western blot analysis of Claudin 5 in HELA lysates using Claudin5 antibody.



Western blot analysis of Claudin 5 in A549 lysates using Claudin 5 antibody.



Product Description

Pioneering GTPase and Oncogene Product Development since 2010
