

CLAUDIN 4 RABBIT PAB

货号: N225437

产品全名: Claudin 4 兔多抗

基因符号 CLDN4; CPER; CPETRI; WBSCR8; Claudin-4; Clostridium perfringens enterotoxin receptor; CPE-R; CPE-receptor; Williams-Beuren syndrome chromosomal region 8 蛋白

UNIPROT ID: O14493

背景: Plays a major role in tight junction-specific obliteration of the intercellular space.

抗原: The antiserum was produced against synthesized peptide derived from human Claudin 4. AA range:160-209

经过测试的应用: WB,IHC-F,IHC-P,ICC/IF,ELISA

推荐稀释比: WB: 1/500-1/1000 IHC: 1/50-1/100 IF: 1/50-1/200 ELISA: 1/10000

种属反应性: Rabbit

克隆性: Rabbit Polyclonal

分子量: Calculated MW: 22 kDa; Observed MW: 22 kDa

亚型: IgG

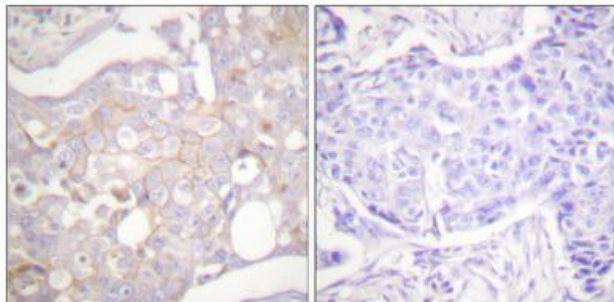
纯化: Affinity Chromatography

种属反应性: Human, Mouse and Rat

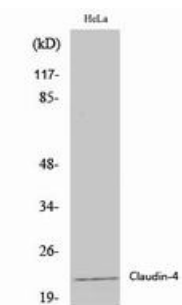
成分: PBS (without Mg²⁺ and Ca²⁺), pH 7.3 containing 50% glycerol, 0.5% BSA and 0.02% sodium azide

研究领域: Cell Biology

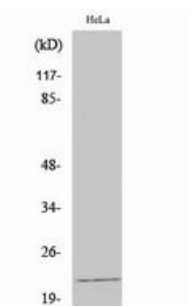
储存和运输: Store at -20°C. Avoid repeated freezing and thawing



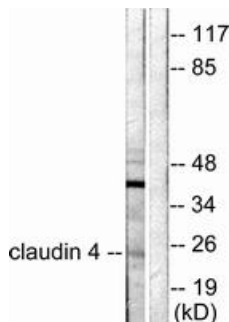
Immunohistochemistry analysis of paraffin-embedded Human breast carcinoma tissue using Claudin 4 antibody. High-pressure and temperature Sodium Citrate pH 6.0 was used for antigen retrieval.



Western blot analysis of Claudin 4 in various lysates using Claudin 4 antibody.



Western blot analysis of Claudin 4 in HeLa lysates using Claudin 4 antibody.



Western blot analysis of Claudin 4 in HeLa lysates using Claudin 4 antibody. The lane on the right is blocked with the synthesized peptide.