

## CLAUDIN 3 RABBIT MAB

货号: N262043

产品全名: Claudin 3 兔单克隆抗体

基因符号 RVPI; HRVPI; C7orf1; CPE-R2; CPETR2

**UNIPROT ID:** O15551

背景: Plays a major role in tight junction-specific obliteration of the intercellular space, through calcium-independent cell-adhesion activity.

抗原: A synthetic peptide of human Claudin 3

经过测试的应用: WB, ICC/IF, IP

推荐稀释比: WB: 1/500-1/1000 IF: 1/50-1/200 IP: 1/20

种属反应性: Rabbit

克隆性: Rabbit Monoclonal

克隆编号: R08-4F8

分子量: Calculated MW: 23 kDa; Observed MW: 20 kDa

亚型: IgG

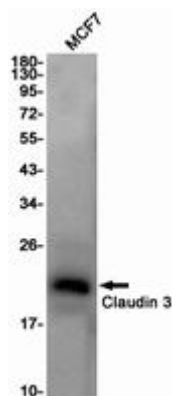
纯化: Affinity Purified

种属反应性: Human

成分: PBS (without Mg<sup>2+</sup> and Ca<sup>2+</sup>), pH 7.3 containing 50% glycerol, 0.5% BSA and 0.02% sodium azide

研究领域: Cell Biology

储存和运输: Store at -20°C. Avoid repeated freezing and thawing



Western blot analysis of Claudin 3 in MCF-7 lysates using Claudin 3 antibody.