

CLASP1 RABBIT PAB

货号: S218505

产品全名: CLASP1 兔多抗

基因符号 MAST1

UNIPROT ID: Q7Z460 (Gene Accession - BC032563)

背景: CLASPs, such as CLASP1, are nonmotor microtubule-associated proteins that interact with CLIPs (e.g., CLIP170; MIM 179838). CLASP1 is involved in the regulation of microtubule dynamics at the kinetochore and throughout the spindle (Maia et al., 2003 [PubMed 12837247]).

抗原: Fusion protein of human CLASP1

经过测试的应用: ELISA, WB, IHC

推荐稀释比: IHC: 50-200;WB: 500-2000;ELISA: 5000-10000

种属反应性: Rabbit

克隆性: Rabbit Polyclonal

亚型: Immunogen-specific rabbit IgG

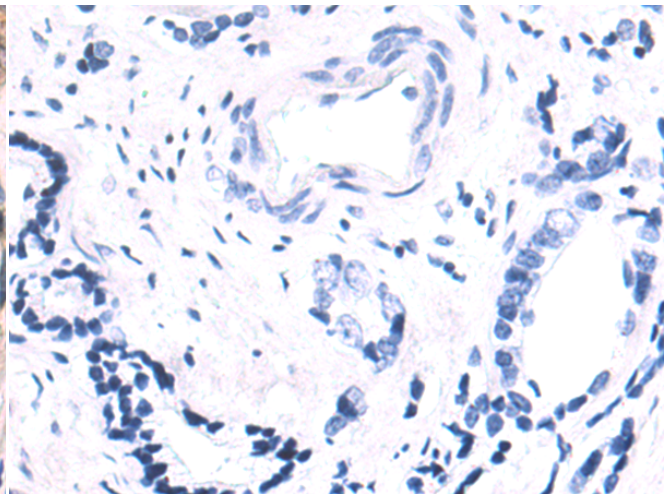
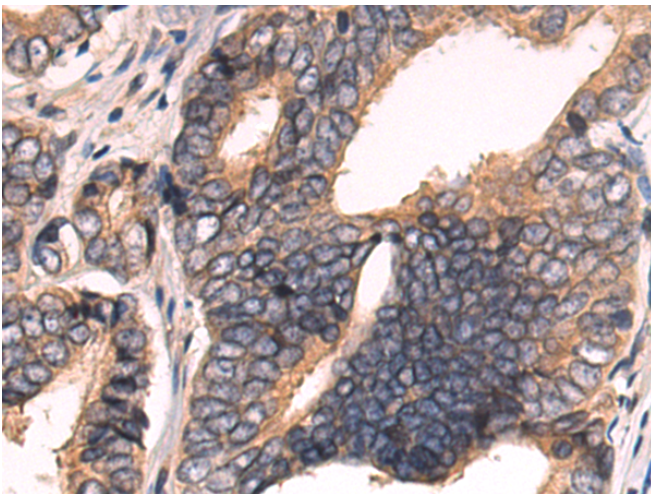
纯化: Antigen affinity purification

种属反应性: Human, Mouse

成分: PBS (without Mg²⁺ and Ca²⁺), pH 7.4, 150 mM NaCl, 0.05% Sodium Azide and 40% glycerol

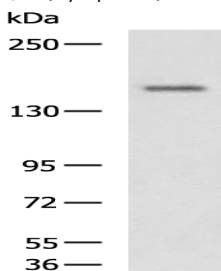
研究领域: Cancer

储存和运输: Store at -20°C. Avoid repeated freezing and thawing



Immunohistochemistry analysis of paraffin embedded Human prostate cancer tissue using 218505 (CLASP1 Antibody) at a dilution of 1/80 (Cytoplasm).

In comparison with the IHC on the left, the same paraffin-embedded Human prostate cancer tissue is first treated with the fusion protein and then with 218505 (Anti-CLASP1 Antibody) at dilution 1/80.



Gel: 6% SDS-PAGE, Lysate: 40 µg;

Lane: Mouse fetal brain tissue lysate;

Primary antibody: 218505 (CLASP1 Antibody) at dilution 1/1300;

Secondary antibody: HRP-conjugated Goat anti rabbit IgG at 1/5000 dilution;

Exposure time: 10 seconds