

CLASP1 RABBIT MAB

货号: N262042

产品全名: CLASP1 兔单克隆抗体

基因符号 CLASP1; KIAA0622; MAST1; CLIP-associating protein 1; Cytoplasmic linker-associated protein 1; Multiple asters homolog 1; Protein Orbit homolog 1; hOrbit1

UNIPROT ID: Q7Z460

背景: Microtubule plus-end tracking protein that promotes the stabilization of dynamic microtubules. Involved in the nucleation of noncentrosomal microtubules originating from the trans-Golgi network (TGN). Required for the polarization of the cytoplasmic microtubule arrays in migrating cells towards the leading edge of the cell.

抗原: A synthetic peptide of human CLASP1

经过测试的应用: WB,IHC-F,IHC-P,ICC/IF

推荐稀释比: WB: 1/500-1/1000 IHC: 1/50-1/100 IF: 1/50-1/200

种属反应性: Rabbit

克隆性: Rabbit Monoclonal

克隆编号: R01-2A2

分子量: Calculated MW: 169 kDa; Observed MW: 160 kDa

亚型: IgG

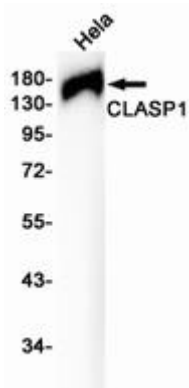
纯化: Affinity Purified

种属反应性: Human

成分: PBS (without Mg²⁺ and Ca²⁺), pH 7.3 containing 50% glycerol, 0.5% BSA and 0.02% sodium azide

研究领域: Cell Biology

储存和运输: Store at -20°C. Avoid repeated freezing and thawing



Western blot analysis of CLASP1 in HeLa lysates using CLASP1 antibody.



Product Description

Pioneering GTPase and Oncogene Product Development since 2010
