

## CKR 1 RABBIT PAB

货号: N225138

产品全名: CKR 1 兔多抗

基因符号 C-C motif chemokine receptor 1; CKR1; CD191; CKR-1; HM145; CMKBRI; MIPLaR; SCYAR1

**UNIPROT ID:** P32246

背景: Receptor for a C-C type chemokine.

抗原: Synthetic peptide from human protein at AA range: 151-200

经过测试的应用: IHC-P, ELISA

推荐稀释比: IHC: 1/50-1/100 ELISA: 1/10000

种属反应性: Rabbit

克隆性: Rabbit Polyclonal

分子量: -

亚型: IgG

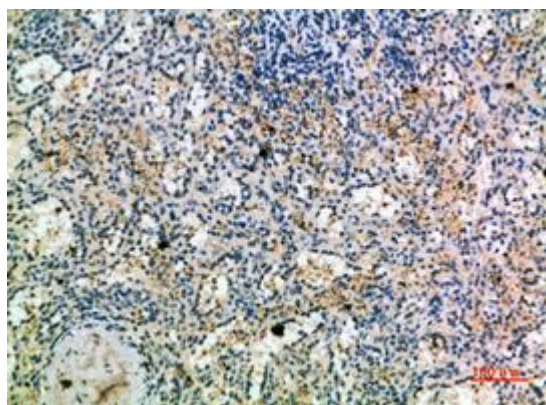
纯化: Affinity Purified

种属反应性: Human

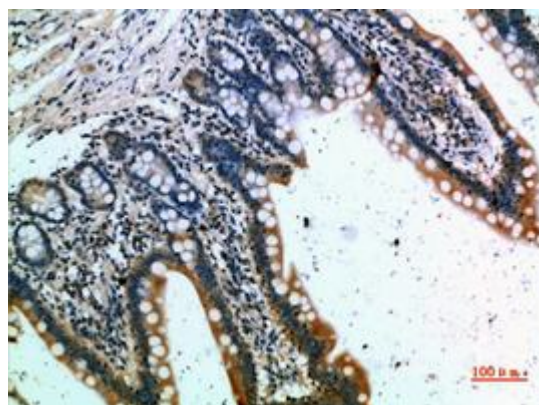
成分: PBS (without Mg<sup>2+</sup> and Ca<sup>2+</sup>), pH 7.3 containing 50% glycerol, 0.5% BSA and 0.02% sodium azide

研究领域: Immunology

储存和运输: Store at -20°C. Avoid repeated freezing and thawing



Immunohistochemical analysis of paraffin-embedded Human tonsils using CKR 1 antibody. High-pressure and temperature Sodium Citrate pH 6.0 was used for antigen retrieval.



Immunohistochemistry analysis of paraffin-embedded Human small intestine using CKR 1 antibody. High-pressure and temperature Sodium Citrate pH 6.0 was used for antigen retrieval.



# Product Description

Pioneering GTPase and Oncogene Product Development since 2010

---