

CKMT1A/CKMT1B RABBIT PAB

货号: S219941

产品全名: CKMT1A/CKMT1B 兔多抗

基因符号: CKMT; CKMT1; UMTCK

UNIPROT ID: P12532 (Gene Accession - NP_066270)

背景: Mitochondrial creatine (MtCK) kinase is responsible for the transfer of high energy phosphate from mitochondria to the cytosolic carrier, creatine. It belongs to the creatine kinase isoenzyme family. It exists as two isoenzymes, sarcomeric MtCK and ubiquitous MtCK, encoded by separate genes. Mitochondrial creatine kinase occurs in two different oligomeric forms: dimers and octamers, in contrast to the exclusively dimeric cytosolic creatine kinase isoenzymes. Many malignant cancers with poor prognosis have shown overexpression of ubiquitous mitochondrial creatine kinase; this may be related to high energy turnover and failure to eliminate cancer cells via apoptosis. Ubiquitous mitochondrial creatine kinase has 80% homology with the coding exons of sarcomeric mitochondrial creatine kinase. Two genes located near each other on chromosome 15 have been identified which encode identical mitochondrial creatine kinase proteins.

抗原: Synthetic peptide of human CKMT1A/CKMT1B

经过测试的应用: ELISA, WB, IHC

推荐稀释比: IHC: 40-200; WB: 500-2000; ELISA: 5000-10000

种属反应性: Rabbit

克隆性: Rabbit Polyclonal

亚型: Immunogen-specific rabbit IgG

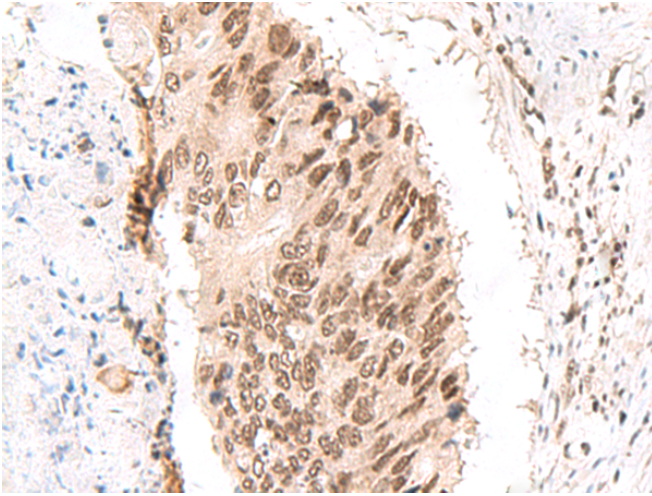
纯化: Antigen affinity purification

种属反应性: Human

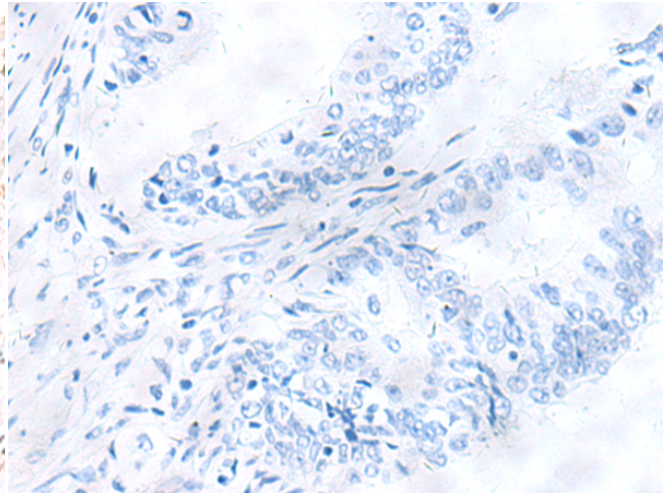
成分: PBS (without Mg²⁺ and Ca²⁺), pH 7.4, 150 mM NaCl, 0.05% Sodium Azide and 40% glycerol

研究领域: Metabolism, Cancer

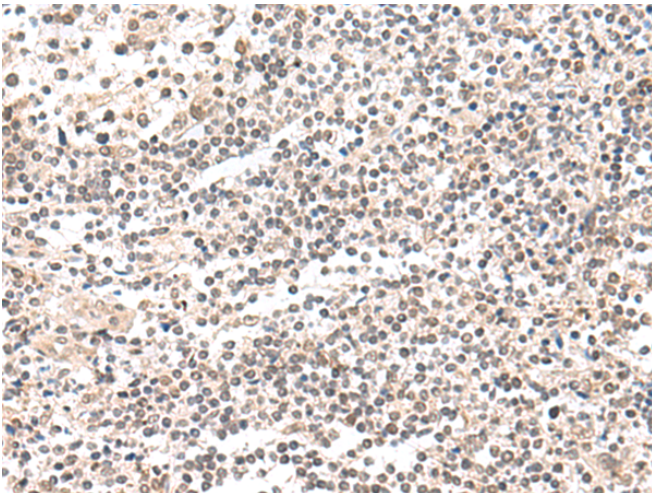
储存和运输: Store at -20°C. Avoid repeated freezing and thawing



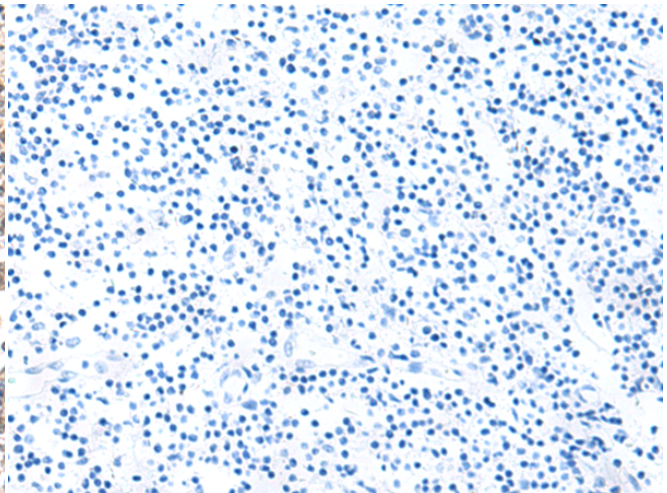
Immunohistochemistry analysis of paraffin embedded Human colorectal cancer tissue using 219941(CKMT1A/CKMT1B Antibody) at a dilution of 1/55 (Cytoplasm and Nucleus).



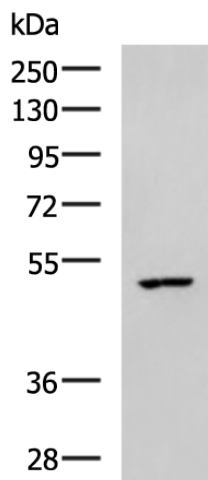
In comparison with the IHC on the left, the same paraffin-embedded Human colorectal cancer tissue is first treated with the synthetic peptide and then with 219941(Anti-CKMT1A/CKMT1B Antibody) at dilution 1/55.



The image on the left is immunohistochemistry of paraffin-embedded Human tonsil tissue using 219941(Anti-CKMT1A/CKMT1B Antibody) at a dilution of 1/55.



In comparison with the IHC on the left, the same paraffin-embedded Human tonsil tissue is first treated with synthetic peptide and then with D260658(Anti-CKMT1A/CKMT1B Antibody) at dilution 1/55.



Gel: 8%SDS-PAGE, Lysate: 40 µg;
Lane: MCF7 cell lysate;
Primary antibody: 219941(CKMT1A/CKMT1B Antibody) at dilution 1/600;
Secondary antibody: HRP-conjugated Goat anti rabbit IgG at 1/5000 dilution;
Exposure time: 1 minute



Product Description

Pioneering GTPase and Oncogene Product Development since 2010
