

CITRATE SYNTHETASE RABBIT PAB

货号: N225845

产品全名: Citrate Synthetase 兔多抗

基因符号 Citrate synthase; Citrate synthase; mitochondrial; Cs

UNIPROT ID: O75390

背景: Carbohydrate metabolism; tricarboxylic acid cycle; isocitrate from oxaloacetate: step 1/2.

抗原: A synthesized peptide derived from human Citrate synthetase

经过测试的应用: WB,IHC-P,ICC/IF,FC

推荐稀释比: WB: 1/500-1/1000 IHC: 1/50-1/100 IF: 1/50-1/200 FC: 1/50-1/100

种属反应性: Rabbit

克隆性: Rabbit Polyclonal

分子量: Calculated MW: 52 kDa; Observed MW: 45 kDa

亚型: IgG

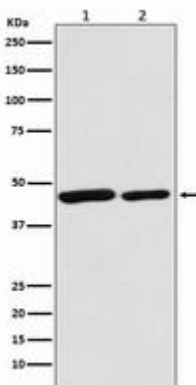
纯化: Affinity Chromatography

种属反应性: Human, Mouse and Rat

成分: PBS (without Mg²⁺ and Ca²⁺), pH 7.3 containing 50% glycerol, 0.5% BSA and 0.02% sodium azide

研究领域: Signal Transduction

储存和运输: Store at -20°C. Avoid repeated freezing and thawing



Western blot analysis of Citrate synthetase in (1) HeLa lysates; (1) mouse spleen lysates using Citrate Synthetase antibody.