

## CITRATE SYNTHETASE RABBIT MAB

货号: N262041

产品全名: Citrate Synthetase 兔单克隆抗体

基因符号 Citrate synthase; Citrate synthase; mitochondrial; Cs

**UNIPROT ID:** O75390

背景: Carbohydrate metabolism; tricarboxylic acid cycle; isocitrate from oxaloacetate: step 1/2.

抗原: A synthetic peptide of human Citrate synthetase

经过测试的应用: WB,IHC-F,IHC-P,ICC/IF

推荐稀释比: WB: 1/500-1/1000 IHC: 1/50-1/100 IF: 1/50-1/200

种属反应性: Rabbit

克隆性: Rabbit Monoclonal

克隆编号: R07-212

分子量: Calculated MW: 52 kDa; Observed MW: 45 kDa

亚型: IgG

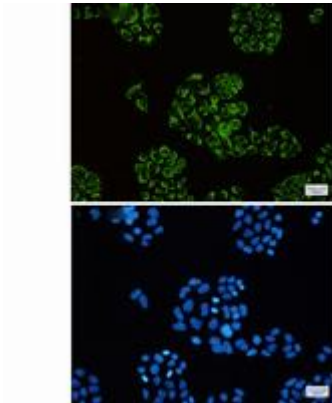
纯化: Affinity Purified

种属反应性: Human, Mouse and Rat

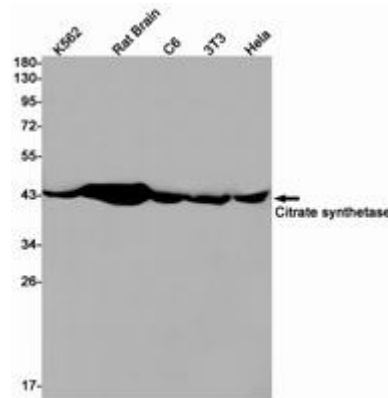
成分: PBS (without Mg<sup>2+</sup> and Ca<sup>2+</sup>), pH 7.3 containing 50% glycerol, 0.5% BSA and 0.02% sodium azide

研究领域: Signal Transduction

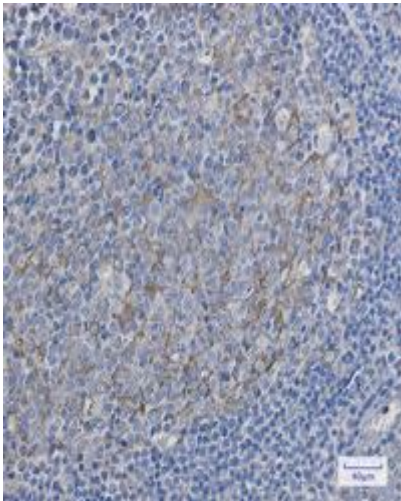
储存和运输: Store at -20°C. Avoid repeated freezing and thawing



Immunocytochemistry analysis of Citrate synthetase (green) in HeLa using Citrate synthetase antibody, and DAPI (blue)



Western blot analysis of Citrate synthetase in K562, rat Brain, C6, 3T3, HeLa lysates using Citrate Synthetase antibody.



Immunohistochemistry analysis of paraffin-embedded Human tonsil using Citrate synthetase antibody. High-pressure and temperature Sodium Citrate pH 6.0 was used for antigen retrieval.