

CIDEB RABBIT PAB

货号: S216867

产品全名: CIDEB 兔多抗

基因符号

UNIPROT ID: Q9UHD4 (Gene Accession - BC035970)

背景: This protein can activate apoptosis. It is inhibited by DFFB and interacts with DFFA and DFFB. It has high levels expression in liver and small intestine, and has lower levels expression in colon, kidney and spleen. CideB specifically interacts with VLDL structural protein, apolipoprotein B100 (apoB100), but not with albumin, a PTG cargo protein. It can interact with COPII components, Sar1 and Sec24

抗原: Fusion protein of human CIDEB

经过测试的应用: ELISA, IHC

推荐稀释比: IHC: 50-200; ELISA: 2000-10000

种属反应性: Rabbit

克隆性: Rabbit Polyclonal

亚型: Immunogen-specific rabbit IgG

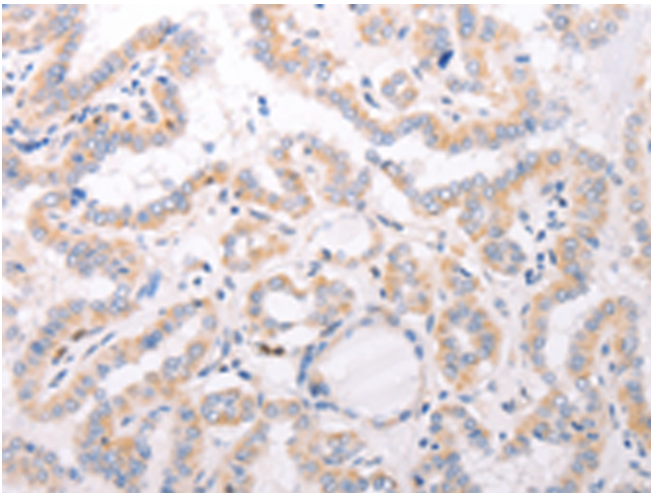
纯化: Antigen affinity purification

种属反应性: Human, Mouse

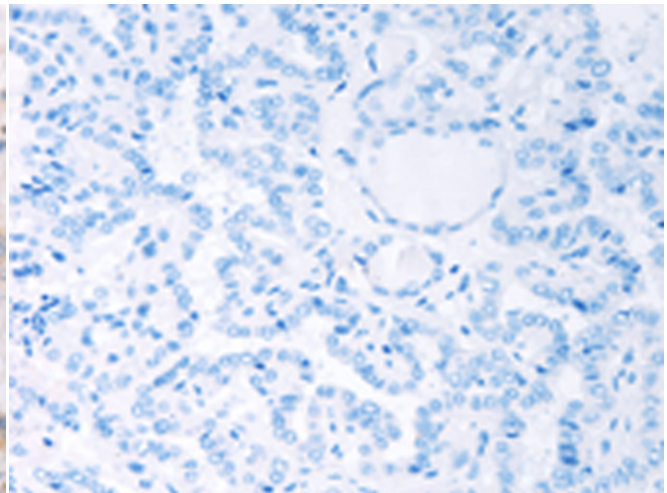
成分: PBS (without Mg²⁺ and Ca²⁺), pH 7.4, 150 mM NaCl, 0.05% Sodium Azide and 40% glycerol

研究领域: Epigenetics and Nuclear Signaling, Cancer

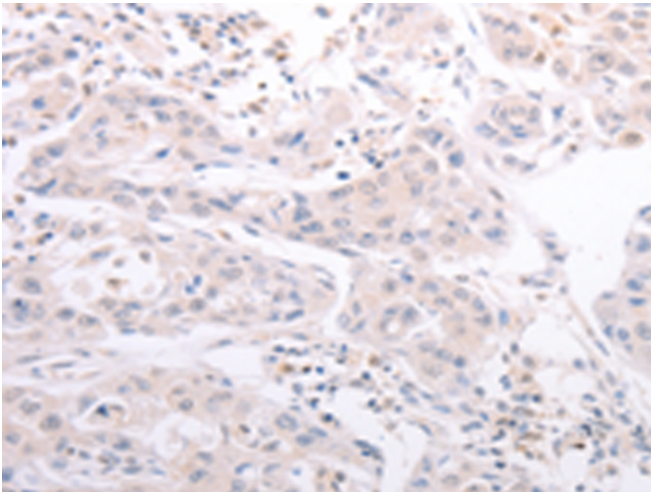
储存和运输: Store at -20°C. Avoid repeated freezing and thawing



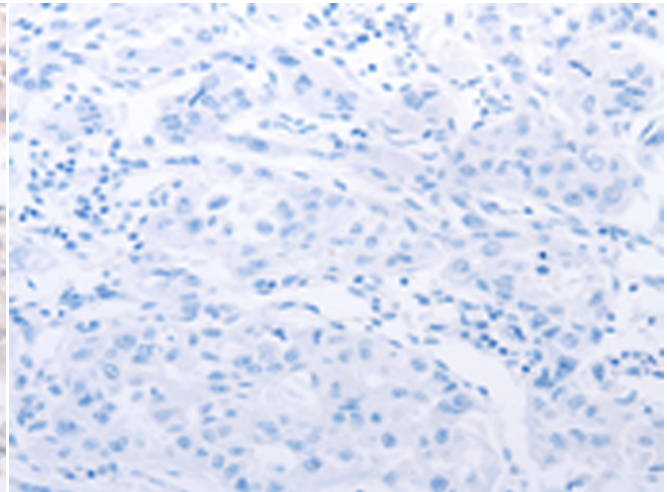
Immunohistochemistry analysis of paraffin embedded Human thyroid cancer tissue using 216867(CIDEB Antibody) at a dilution of 1/50(Cytoplasm).



In comparison with the IHC on the left, the same paraffin-embedded Human thyroid cancer tissue is first treated with the fusion protein and then with 216867(Anti-CIDEB Antibody) at dilution 1/50.



The image on the left is immunohistochemistry of paraffin-embedded Human lung cancer tissue using 216867(Anti-CIDEB Antibody) at a dilution of 1/50.



In comparison with the IHC on the left, the same paraffin-embedded Human lung cancer tissue is first treated with fusion protein and then with D221386(Anti-CIDEB Antibody) at dilution 1/50.

