

CHST3 RABBIT PAB

货号: S221735

产品全名: CHST3 兔多抗

基因符号 HSD; C6ST; C6ST1

UNIPROT ID: Q7LGC8 (Gene Accession - NP_004264)

背景: This gene encodes an enzyme which catalyzes the sulfation of chondroitin, a proteoglycan found in the extracellular matrix and most cells which is involved in cell migration and differentiation. Mutations in this gene are associated with spondylepiphyseal dysplasia and humerospinal dysostosis.

抗原: Synthetic peptide of human CHST3

经过测试的应用: ELISA, IHC

推荐稀释比: IHC: 50-100; ELISA: 5000-10000

种属反应性: Rabbit

克隆性: Rabbit Polyclonal

亚型: Immunogen-specific rabbit IgG

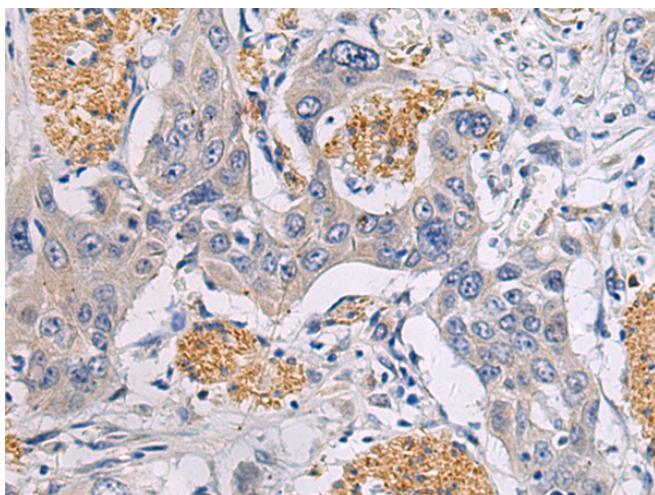
纯化: Antigen affinity purification

种属反应性: Human, Mouse, Rat

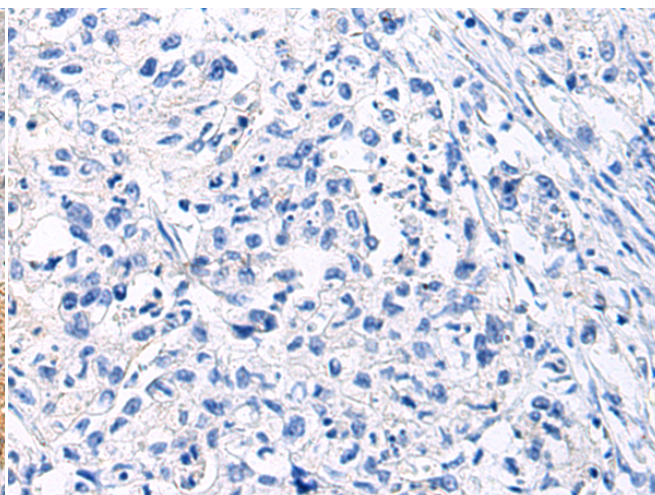
成分: PBS (without Mg²⁺ and Ca²⁺), pH 7.4, 150 mM NaCl, 0.05% Sodium Azide and 40% glycerol

研究领域: Signal Transduction

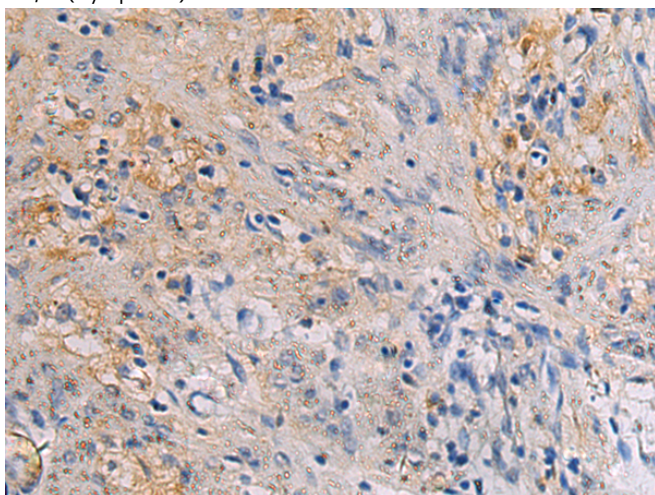
储存和运输: Store at -20°C. Avoid repeated freezing and thawing



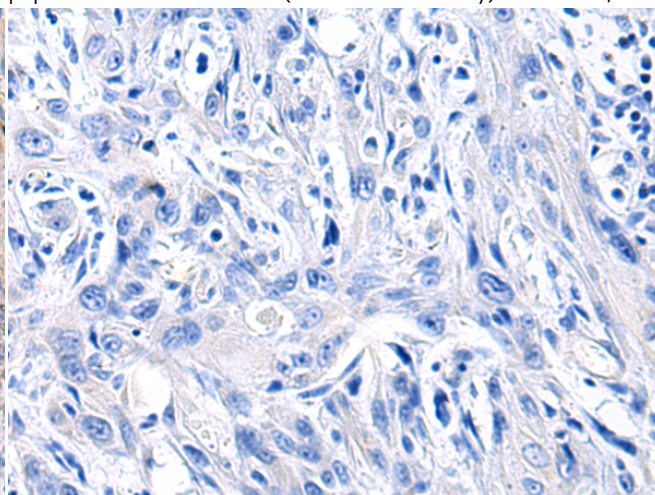
Immunohistochemistry analysis of paraffin embedded Human esophagus cancer tissue using 221735(CHST3 Antibody) at a dilution of 1/30(Cytoplasm).



In comparison with the IHC on the left, the same paraffin-embedded Human esophagus cancer tissue is first treated with the synthetic peptide and then with 221735(Anti-CHST3 Antibody) at dilution 1/30.



The image on the left is immunohistochemistry of paraffin-embedded Human gastric cancer tissue using 221735(Anti-CHST3 Antibody) at a dilution of 1/30.



In comparison with the IHC on the left, the same paraffin-embedded Human gastric cancer tissue is first treated with synthetic peptide and then with D263458(Anti-CHST3 Antibody) at dilution 1/30.



Product Description

Pioneering GTPase and Oncogene Product Development since 2010
