

CHRN2 RABBIT PAB

货号: S215083

产品全名: CHRN2 兔多抗

基因符号: EFNL3; nAChRB2

UNIPROT ID: P17787 (Gene Accession - NP_000739)

背景: Neuronal acetylcholine receptors are homo- or heteropentameric complexes composed of homologous alpha and beta subunits. They belong to a superfamily of ligand-gated ion channels which allow the flow of sodium and potassium across the plasma membrane in response to ligands such as acetylcholine and nicotine. This gene encodes one of several beta subunits. Mutations in this gene are associated with autosomal dominant nocturnal frontal lobe epilepsy.

抗原: Synthetic peptide of human CHRN2

经过测试的应用: ELISA, IHC

推荐稀释比: IHC: 25-50; ELISA: 5000-10000

种属反应性: Rabbit

克隆性: Rabbit Polyclonal

亚型: Immunogen-specific rabbit IgG

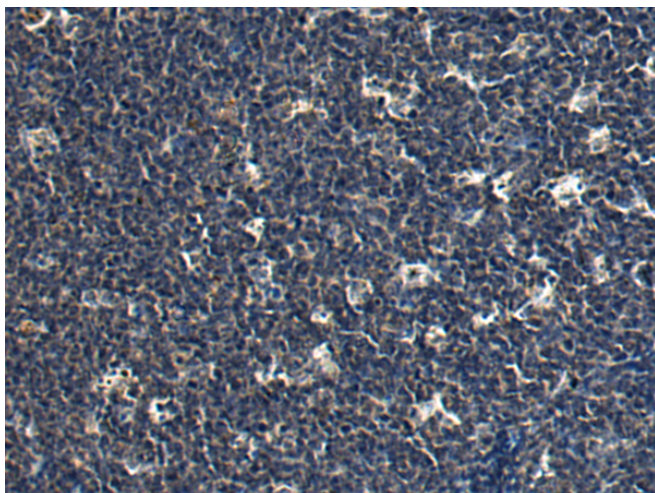
纯化: Antigen affinity purification

种属反应性: Human, Mouse, Rat

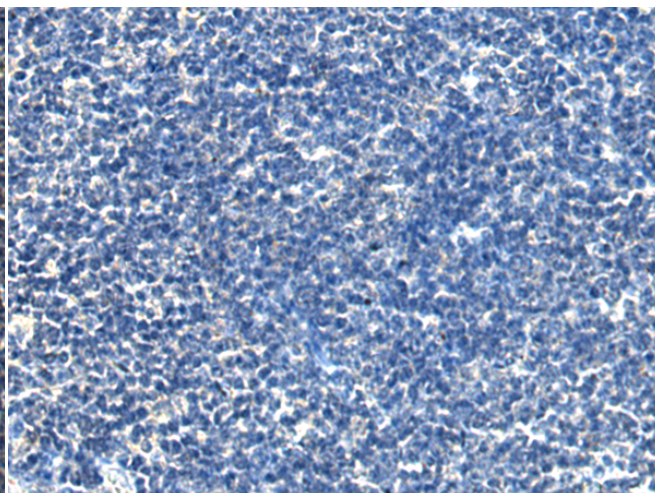
成分: PBS (without Mg²⁺ and Ca²⁺), pH 7.4, 150 mM NaCl, 0.05% Sodium Azide and 40% glycerol

研究领域: Cancer, Cardiovascular, Neuroscience

储存和运输: Store at -20°C. Avoid repeated freezing and thawing



Immunohistochemistry analysis of paraffin embedded Human tonsil tissue using 215083(CHRNB2 Antibody) at a dilution of 1/30 (Cell membrane).



In comparison with the IHC on the left, the same paraffin-embedded Human tonsil tissue is first treated with the synthetic peptide and then with 215083(Anti-CHRNB2 Antibody) at dilution 1/30.