

## CHRNA3 RABBIT PAB

货号: S219932

产品全名: CHRNA3 兔多抗

基因符号: LNCR2, PAOD2, NACHRA3

**UNIPROT ID:** P32297 (Gene Accession - NP\_000734)

**背景:** This locus encodes a member of the nicotinic acetylcholine receptor family of proteins. Members of this family of proteins form pentameric complexes comprised of both alpha and beta subunits. This locus encodes an alpha-type subunit, as it contains characteristic adjacent cysteine residues. The encoded protein is a ligand-gated ion channel that likely plays a role in neurotransmission. Polymorphisms in this gene have been associated with an increased risk of smoking initiation and an increased susceptibility to lung cancer. Alternatively spliced transcript variants have been described.

**抗原:** Synthetic peptide of human CHRNA3

**经过测试的应用:** ELISA, WB, IHC

**推荐稀释比:** IHC: 15-50;WB: 1000-5000;ELISA: 2000-10000

**种属反应性:** Rabbit

**克隆性:** Rabbit Polyclonal

**亚型:** Immunogen-specific rabbit IgG

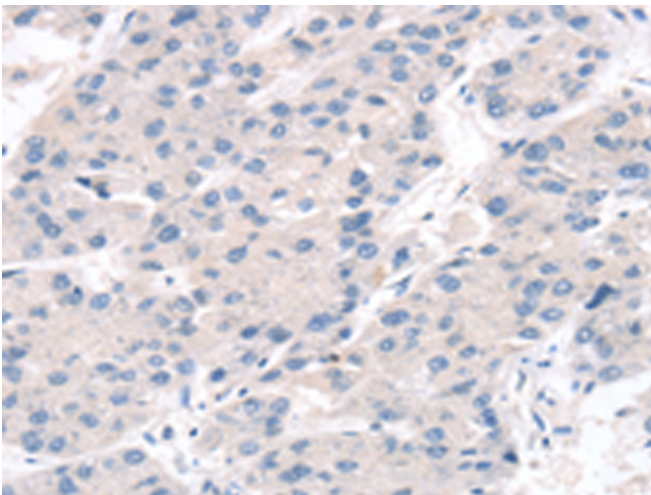
**纯化:** Antigen affinity purification

**种属反应性:** Human, Mouse, Rat

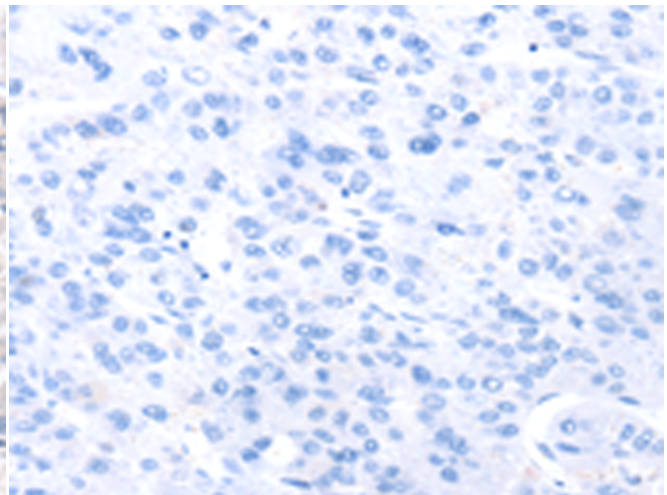
**成分:** PBS (without Mg<sup>2+</sup> and Ca<sup>2+</sup>), pH 7.4, 150 mM NaCl, 0.05% Sodium Azide and 40% glycerol

**研究领域:** Neuroscience

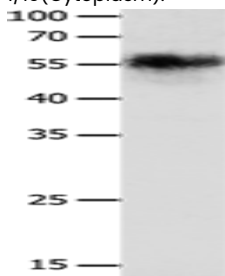
**储存和运输:** Store at -20°C. Avoid repeated freezing and thawing



Immunohistochemistry analysis of paraffin embedded Human ovarian cancer tissue using 219932(CHRNA3 Antibody) at a dilution of 1/10(Cytoplasm).



In comparison with the IHC on the left, the same paraffin-embedded Human ovarian cancer tissue is first treated with the synthetic peptide and then with 219932(Anti-CHRNA3 Antibody) at dilution 1/10.



Gel: 10%SDS-PAGE, Lysate: 40 µg;

Lane: HeLa cells;

Primary antibody: 219932(CHRNA3 Antibody) at dilution 1/600;

Secondary antibody: Goat anti rabbit IgG at 1/8000 dilution;

Exposure time: 1 minute