

CHRNA10 RABBIT PAB

货号: S219933

产品全名: CHRNA10 兔多抗

基因符号

UNIPROT ID: Q9GZZ6 (Gene Accession - NP_065135)

背景: Predicted to enable acetylcholine-gated cation-selective channel activity. Acts upstream of or within positive regulation of cytosolic calcium ion concentration. Predicted to be located in membrane. Predicted to be active in cholinergic synapse and neuron projection. Predicted to be integral component of postsynaptic specialization membrane.

抗原: Synthetic peptide of human CHRNA10

经过测试的应用: ELISA, IHC

推荐稀释比: IHC: 50-100; ELISA: 5000-10000

种属反应性: Rabbit

克隆性: Rabbit Polyclonal

亚型: Immunogen-specific rabbit IgG

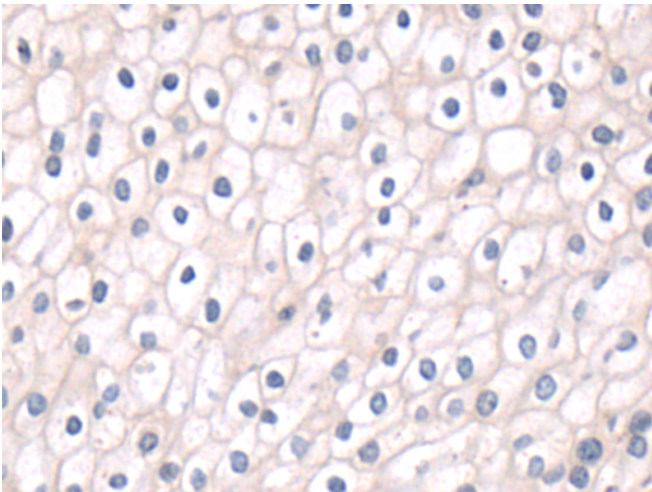
纯化: Antigen affinity purification

种属反应性: Human

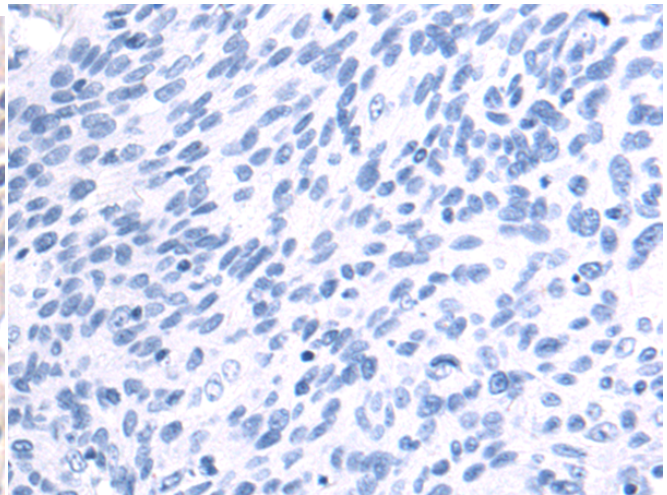
成分: PBS (without Mg²⁺ and Ca²⁺), pH 7.4, 150 mM NaCl, 0.05% Sodium Azide and 40% glycerol

研究领域: Signal Transduction, Neuroscience

储存和运输: Store at -20°C. Avoid repeated freezing and thawing



Immunohistochemistry analysis of paraffin embedded Human cervical cancer tissue using 219933(CHRNA10 Antibody) at a dilution of 1/50(Cell membrane).



In comparison with the IHC on the left, the same paraffin-embedded Human cervical cancer tissue is first treated with the synthetic peptide and then with 219933(Anti-CHRNA10 Antibody) at dilution 1/50.