

CHRD2 RABBIT PAB

货号: S220458

产品全名: CHRD2 兔多抗

基因符号: BNF1; CHL2; FKSG37

UNIPROT ID: Q6WN34 (Gene Accession - NP_056239)

背景: CHRD2 (chordin-related protein 2), also known as BNF1 (breast tumor novel factor 1) or CHL2 (chordin-like 2), is a 429 amino acid protein that belongs to the chordin family of proteins. CHRD2 contains three VWFC (von Willebrand Factor type C) domains and is predominantly expressed in uterus and moderately expressed in prostate, liver, ovary, heart and testis. Due to alternative splicing events, CHRD2 exists as five isoforms, namely isoform I, isoform II, isoform VII, isoform VIII and isoform IX. Two of these isoforms are secreted, while the other three localize to the cytoplasm. Functioning as a BMP-binding inhibitor, CHRD2 directly interacts with BMPs and blocks their binding to BMP receptors, thereby inhibiting BMP activity. In breast, lung and colon tumors, CHRD2 expression is upregulated, suggesting a possible role in tumorigenesis.

抗原: Synthetic peptide of human CHRD2

经过测试的应用: ELISA, IHC

推荐稀释比: IHC: 25-100; ELISA: 2000-5000

种属反应性: Rabbit

克隆性: Rabbit Polyclonal

亚型: Immunogen-specific rabbit IgG

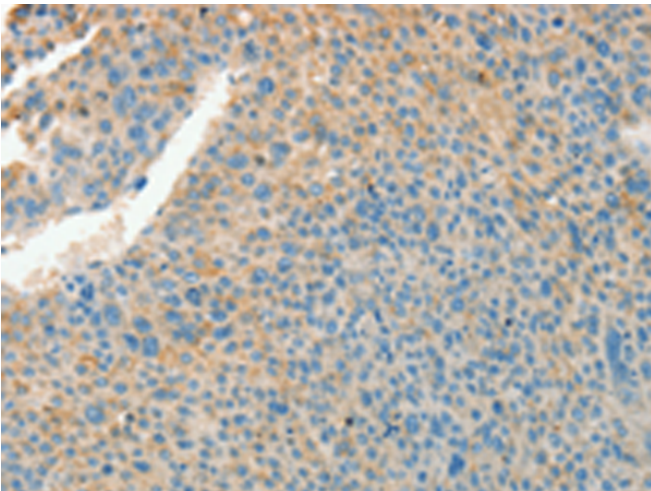
纯化: Antigen affinity purification

种属反应性: Human

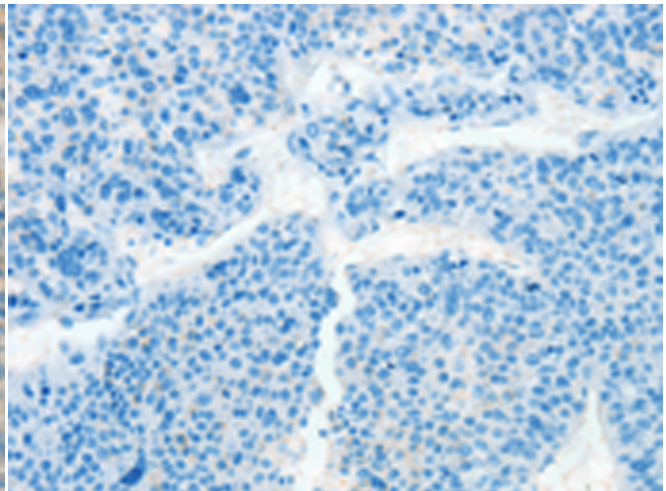
成分: PBS (without Mg²⁺ and Ca²⁺), pH 7.4, 150 mM NaCl, 0.05% Sodium Azide and 40% glycerol

研究领域: Signal Transduction, Cardiovascular

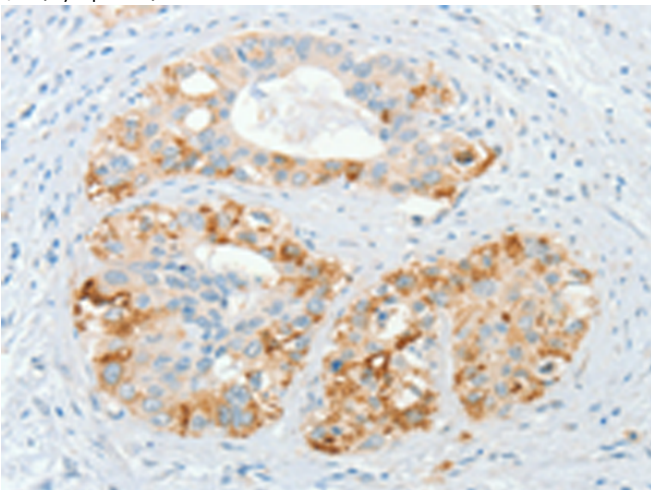
储存和运输: Store at -20°C. Avoid repeated freezing and thawing



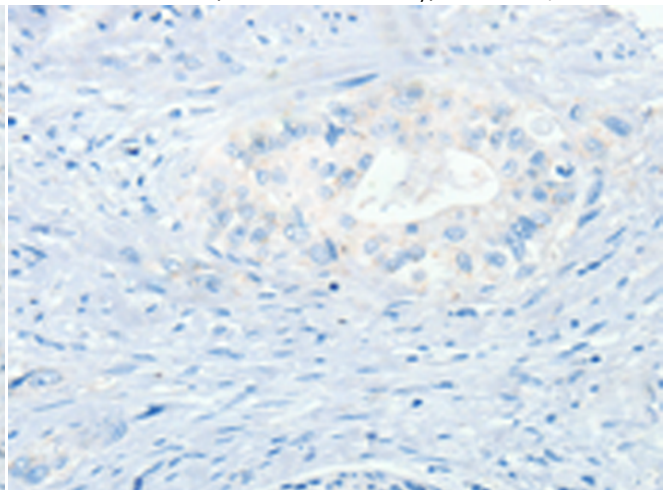
Immunohistochemistry analysis of paraffin embedded Human liver cancer tissue using 220458(CHRDL2 Antibody) at a dilution of 1/20(Cytoplasm).



In comparison with the IHC on the left, the same paraffin-embedded Human liver cancer tissue is first treated with the synthetic peptide and then with 220458(Anti-CHRDL2 Antibody) at dilution 1/20.



The image on the left is immunohistochemistry of paraffin-embedded Human cervical cancer tissue using 220458(Anti-CHRDL2 Antibody) at a dilution of 1/20.



In comparison with the IHC on the left, the same paraffin-embedded Human cervical cancer tissue is first treated with synthetic peptide and then with D261558(Anti-CHRDL2 Antibody) at dilution 1/20.



Product Description

Pioneering GTPase and Oncogene Product Development since 2010
