

CHODL RABBIT PAB

货号: S221732

产品全名: CHODL 兔多抗

基因符号 MT75; PRED12; C21orf68

UNIPROT ID: Q9H9P2 (Gene Accession - NP_079220)

背景: This gene encodes a type I membrane protein with a carbohydrate recognition domain characteristic of C-type lectins in its extracellular portion. In other proteins, this domain is involved in endocytosis of glycoproteins and exogenous sugar-bearing pathogens. This protein localizes predominantly to the perinuclear region. Several transcript variants encoding a few different isoforms have been found for this gene.

抗原: Synthetic peptide of human CHODL

经过测试的应用: ELISA, IHC

推荐稀释比: IHC: Oct-50; ELISA: 5000-10000

种属反应性: Rabbit

克隆性: Rabbit Polyclonal

亚型: Immunogen-specific rabbit IgG

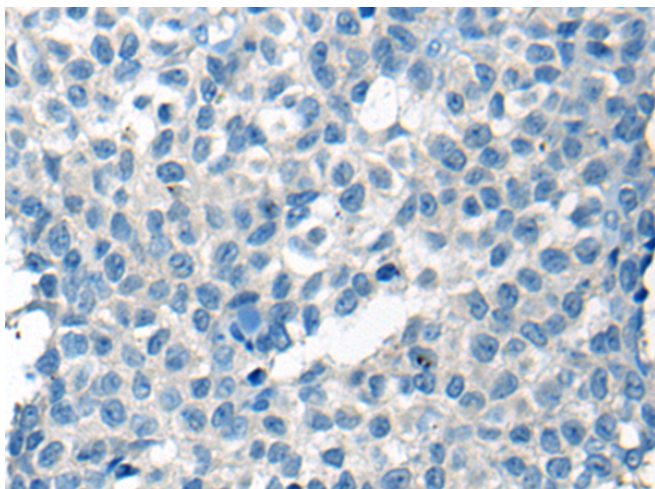
纯化: Antigen affinity purification

种属反应性: Human, Mouse

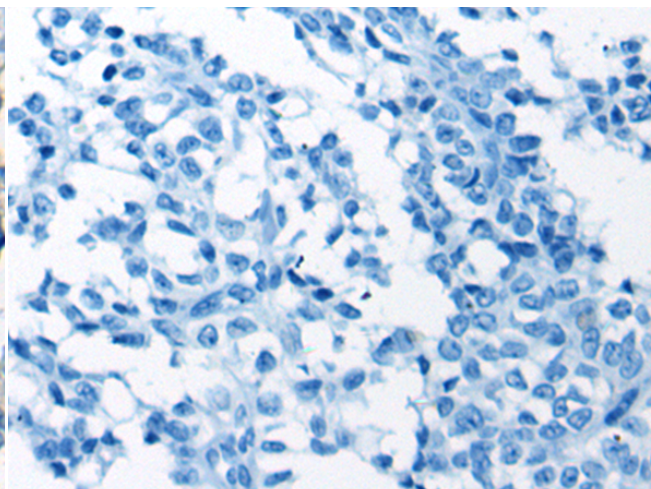
成分: PBS (without Mg²⁺ and Ca²⁺), pH 7.4, 150 mM NaCl, 0.05% Sodium Azide and 40% glycerol

研究领域: Developmental Biology

储存和运输: Store at -20°C. Avoid repeated freezing and thawing



Immunohistochemistry analysis of paraffin embedded Human ovarian cancer tissue using 221732(ChODL Antibody) at a dilution of 1/20(Cytoplasm and Cell membrane).



In comparison with the IHC on the left, the same paraffin-embedded Human ovarian cancer tissue is first treated with the synthetic peptide and then with 221732(Anti-CHODL Antibody) at dilution 1/20.