

## CHMP6 RABBIT PAB

货号: S212219

产品全名: CHMP6 兔多抗

基因符号 VPS20

**UNIPROT ID:** Q96FZ7 (Gene Accession - BC010108)

**背景:** This gene encodes a member of the chromatin-modifying protein/charged multivesicular body protein family. Proteins in this family are part of the ESCRT-III (endosomal sorting complex required for transport III) which degrades surface receptors, and in biosynthesis of endosomes.

**抗原:** Fusion protein of human CHMP6

**经过测试的应用:** ELISA, WB, IHC

**推荐稀释比:** IHC: 50-100;WB: 500-2000;ELISA: 5000-10000

**种属反应性:** Rabbit

**克隆性:** Rabbit Polyclonal

**亚型:** Immunogen-specific rabbit IgG

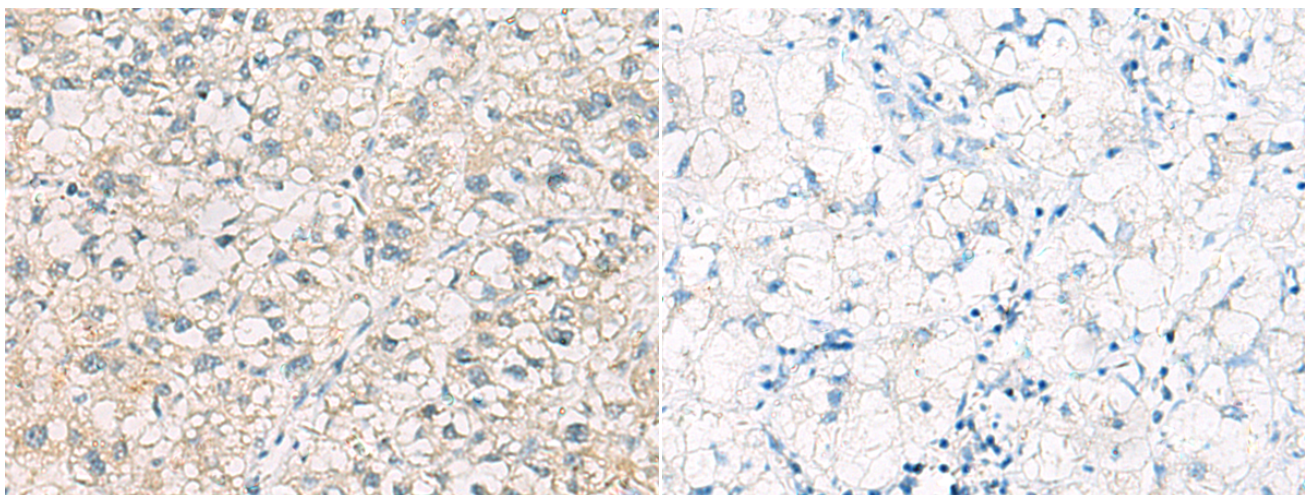
**纯化:** Antigen affinity purification

**种属反应性:** Human, Mouse

**成分:** PBS (without Mg<sup>2+</sup> and Ca<sup>2+</sup>), pH 7.4, 150 mM NaCl, 0.05% Sodium Azide and 40% glycerol

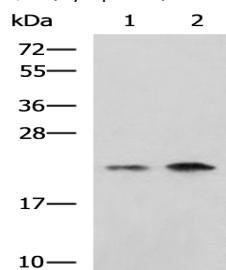
**研究领域:** Signal Transduction

**储存和运输:** Store at -20°C. Avoid repeated freezing and thawing



Immunohistochemistry analysis of paraffin embedded Human liver cancer tissue using 212219(CHMP6 Antibody) at a dilution of 1/65(Cytoplasm).

In comparison with the IHC on the left, the same paraffin-embedded Human liver cancer tissue is first treated with the fusion protein and then with 212219(Anti-CHMP6 Antibody) at dilution 1/65.



Gel: 12%SDS-PAGE, Lysate: 40 µg;

Lane 1-2: Jurkat, Raji cell lysates;

Primary antibody: 212219(CHMP6 Antibody) at dilution 1/1000;

Secondary antibody: HRP-conjugated Goat anti rabbit IgG at 1/5000 dilution;

Exposure time: 1 minute