

CHD3 RABBIT PAB

货号: S221086

产品全名: CHD3 兔多抗

基因符号: ZFH; Mi-2 α ; SNIBCPS; Mi2-ALPHA

UNIPROT ID: Q12873 (Gene Accession - NP_001005273)

背景: This gene encodes a member of the CHD family of proteins which are characterized by the presence of chromo (chromatin organization modifier) domains and SNF2-related helicase/ATPase domains. This protein is one of the components of a histone deacetylase complex referred to as the Mi-2/NuRD complex which participates in the remodeling of chromatin by deacetylating histones. Chromatin remodeling is essential for many processes including transcription. Autoantibodies against this protein are found in a subset of patients with dermatomyositis. Three alternatively spliced transcripts encoding different isoforms have been described. [provided by RefSeq, Jul 2008]

抗原: Synthetic peptide of human CHD3

经过测试的应用: ELISA, IHC

推荐稀释比: IHC: 50-100; ELISA: 5000-10000

种属反应性: Rabbit

克隆性: Rabbit Polyclonal

亚型: Immunogen-specific rabbit IgG

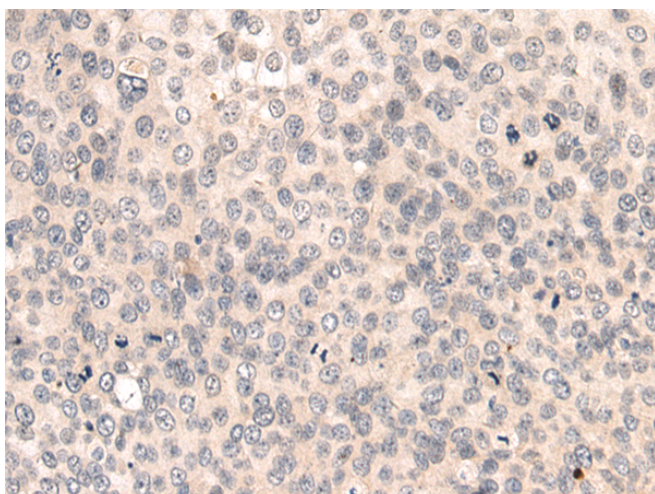
纯化: Antigen affinity purification

种属反应性: Human

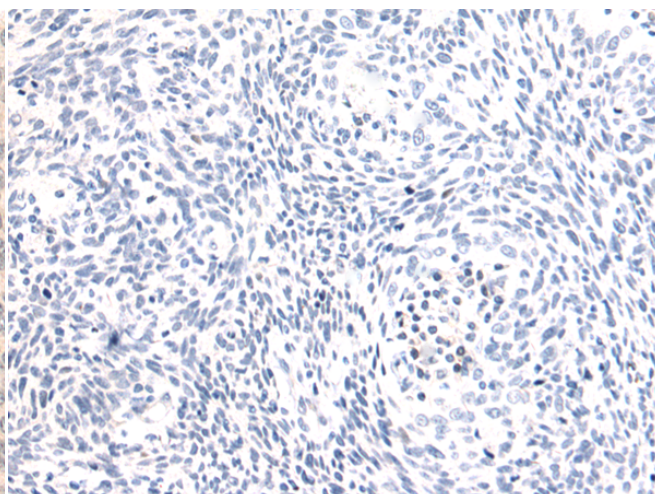
成分: PBS (without Mg²⁺ and Ca²⁺), pH 7.4, 150 mM NaCl, 0.05% Sodium Azide and 40% glycerol

研究领域: Epigenetics and Nuclear Signaling, Immunology

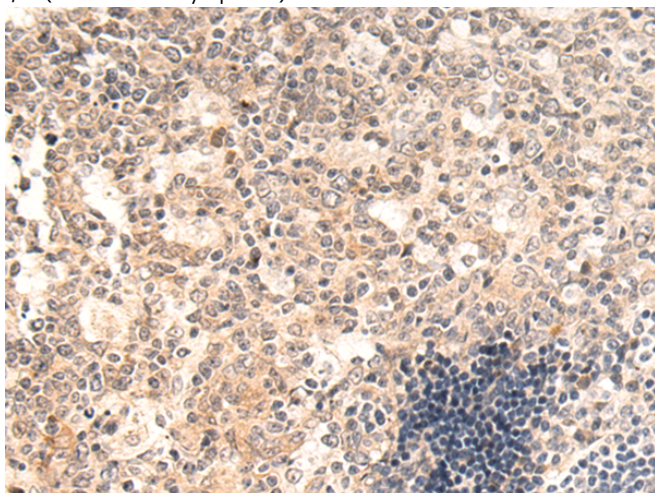
储存和运输: Store at -20°C. Avoid repeated freezing and thawing



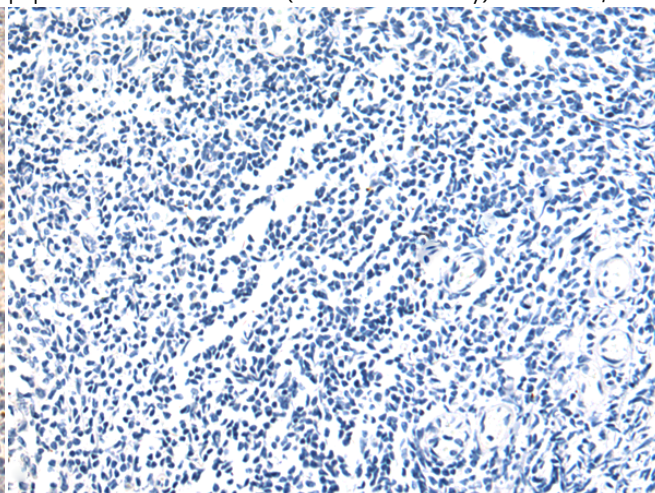
Immunohistochemistry analysis of paraffin embedded Human cervical cancer tissue using 221086(ChD3 Antibody) at a dilution of 1/50(Nucleus and Cytoplasm).



In comparison with the IHC on the left, the same paraffin-embedded Human cervical cancer tissue is first treated with the synthetic peptide and then with 221086(Anti-ChD3 Antibody) at dilution 1/50.



The image on the left is immunohistochemistry of paraffin-embedded Human tonsil tissue using 221086(Anti-ChD3 Antibody) at a dilution of 1/50.



In comparison with the IHC on the left, the same paraffin-embedded Human tonsil tissue is first treated with synthetic peptide and then with D262456(Anti-ChD3 Antibody) at dilution 1/50.



Product Description

Pioneering GTPase and Oncogene Product Development since 2010
