

## CGBP RABBIT MAB

货号: N262030

产品全名: CGBP 兔单克隆抗体

基因符号 CFPI; CGBP; SPPI; PCCX1; PHF18; hCGBP; ZCGPC1; HsT2645;  
2410002I16Rik; 5830420C16Rik

**UNIPROT ID:** Q9P0U4

背景: Transcriptional activator that exhibits a unique DNA binding specificity for CpG unmethylated motifs with a preference for CpGG.

抗原: A synthetic peptide of CGBP

经过测试的应用: WB,IHC-F,IHC-P,ICC/IF,IP

推荐稀释比: WB: 1/500-1/1000 IHC: 1/50-1/100 IF: 1/50-1/200 IP: 1/20

种属反应性: Rabbit

克隆性: Rabbit Monoclonal

克隆编号: R06-4K1

分子量: Calculated MW: 76 kDa; Observed MW: 76 kDa

亚型: IgG

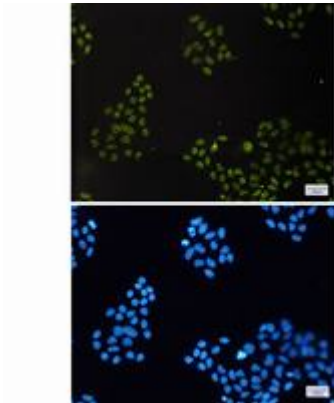
纯化: Affinity Purified

种属反应性: Human, Mouse and Rat

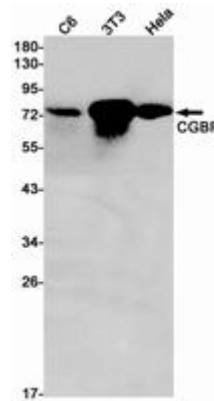
成分: PBS (without Mg<sup>2+</sup> and Ca<sup>2+</sup>), pH 7.3 containing 50% glycerol, 0.5% BSA and 0.02% sodium azide

研究领域: Epigenetics and Nuclear Signaling

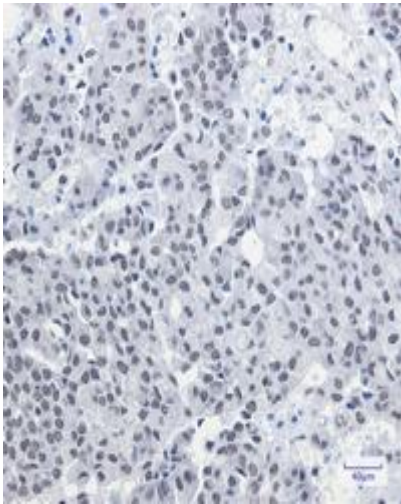
储存和运输: Store at -20°C. Avoid repeated freezing and thawing



Immunocytochemistry analysis of CGBP (green) in HeLa using CGBP antibody, and DAPI (blue)



Western blot analysis of CGBP in C6, 3T3, HeLa lysates using CGBP antibody.



Immunohistochemistry analysis of paraffin-embedded Human breast cancer using CGBP antibody. High-pressure and temperature Sodium Citrate pH 6.0 was used for antigen retrieval.