

CFTR RABBIT PAB

货号: S219694

产品全名: CFTR 兔多抗

基因符号: CF, MRP7, ABC35, ABCC7, CFTR/MRP, TNR-CFTR, dJ760C5.1

UNIPROT ID: P13569 (Gene Accession - NP_000483)

背景: This gene encodes a member of the ATP-binding cassette (ABC) transporter superfamily. ABC proteins transport various molecules across extra- and intra-cellular membranes. ABC genes are divided into seven distinct subfamilies (ABC1, MDR/TAP, MRP, ALD, OABP, GCN20, White). This protein is a member of the MRP subfamily that is involved in multi-drug resistance. The encoded protein functions as a chloride channel and controls the regulation of other transport pathways. Mutations in this gene are associated with the autosomal recessive disorders cystic fibrosis and congenital bilateral aplasia of the vas deferens. Alternatively spliced transcript variants have been described, many of which result from mutations in this gene.

抗原: Synthetic peptide of human CFTR

经过测试的应用: ELISA, IHC

推荐稀释比: IHC: Oct-50; ELISA: 500-5000

种属反应性: Rabbit

克隆性: Rabbit Polyclonal

亚型: Immunogen-specific rabbit IgG

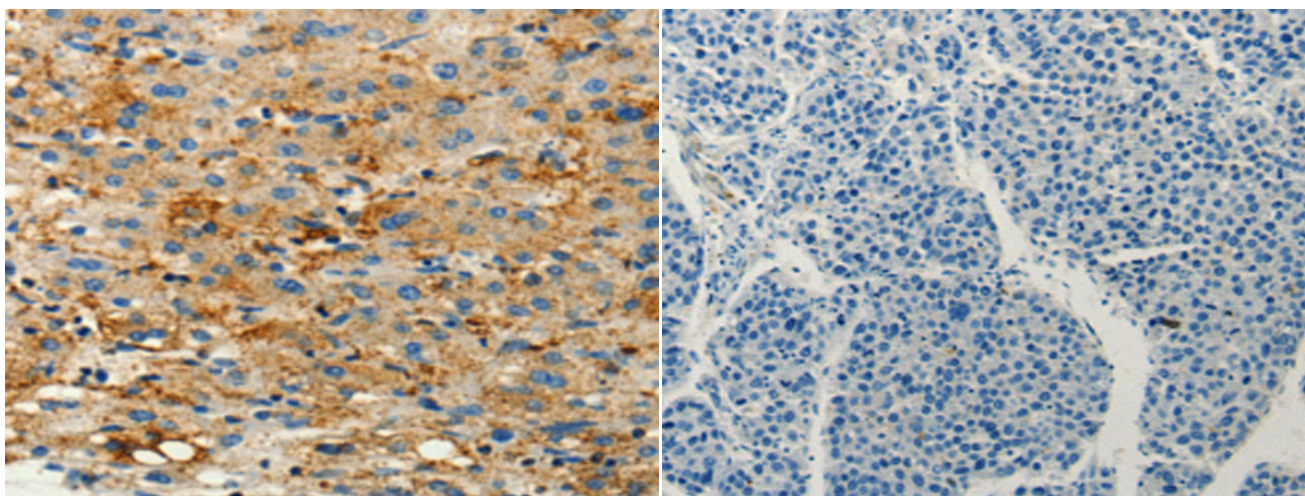
纯化: Antigen affinity purification

种属反应性: Human

成分: PBS (without Mg²⁺ and Ca²⁺), pH 7.4, 150 mM NaCl, 0.05% Sodium Azide and 40% glycerol

研究领域: Metabolism, Cell Biology

储存和运输: Store at -20°C. Avoid repeated freezing and thawing



Immunohistochemistry analysis of paraffin embedded Human liver cancer tissue using 219694(CFTR Antibody) at a dilution of 1/10(Cytoplasm, Cell membrane).

In comparison with the IHC on the left, the same paraffin-embedded Human liver cancer tissue is first treated with the synthetic peptide and then with 219694(Anti-CFTR Antibody) at dilution 1/10.