

CFAP52 RABBIT PAB

货号: S218024

产品全名: CFAP52 兔多抗

基因符号: WDR16; WDRPUH

UNIPROT ID: Q8NIV2 (Gene Accession - BC025392)

背景: WD repeat-containing proteins, such as WDR16, play crucial roles in a wide range of physiologic functions, including signal transduction, RNA processing, remodeling the cytoskeleton, regulation of vesicular traffic, and cell division

抗原: Fusion protein of human CFAP52

经过测试的应用: ELISA, IHC

推荐稀释比: IHC: 25-100; ELISA: 2000-5000

种属反应性: Rabbit

克隆性: Rabbit Polyclonal

亚型: Immunogen-specific rabbit IgG

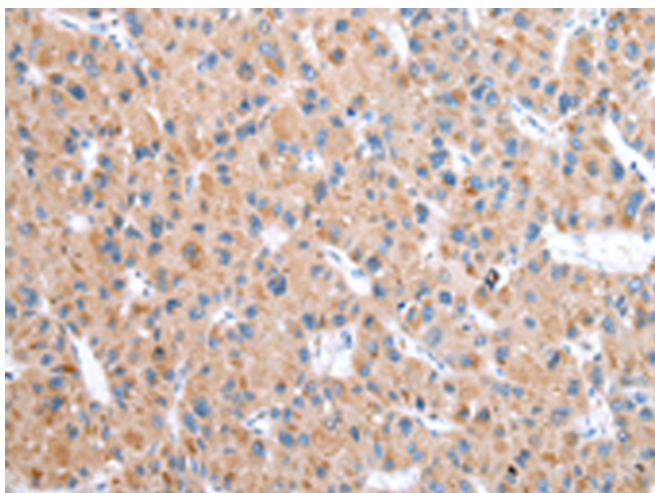
纯化: Antigen affinity purification

种属反应性: Human, Mouse

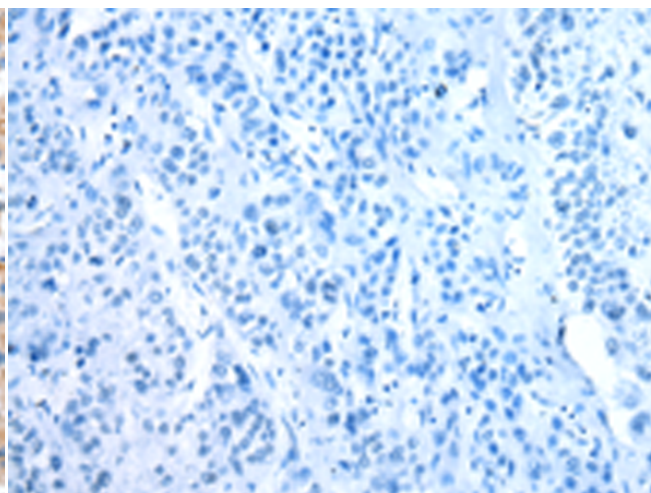
成分: PBS (without Mg²⁺ and Ca²⁺), pH 7.4, 150 mM NaCl, 0.05% Sodium Azide and 40% glycerol

研究领域: Cancer

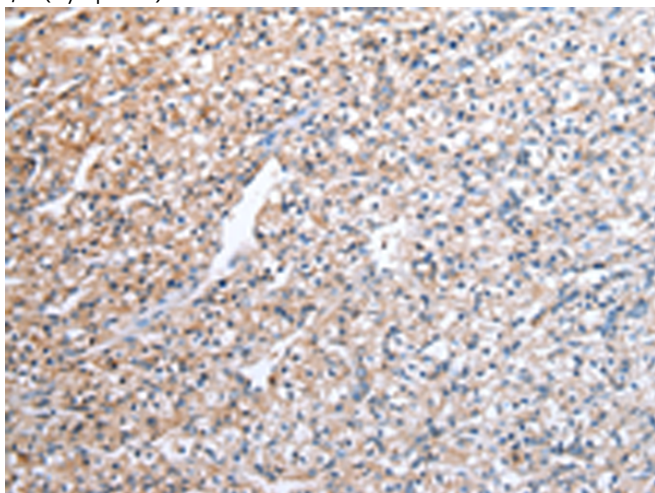
储存和运输: Store at -20°C. Avoid repeated freezing and thawing



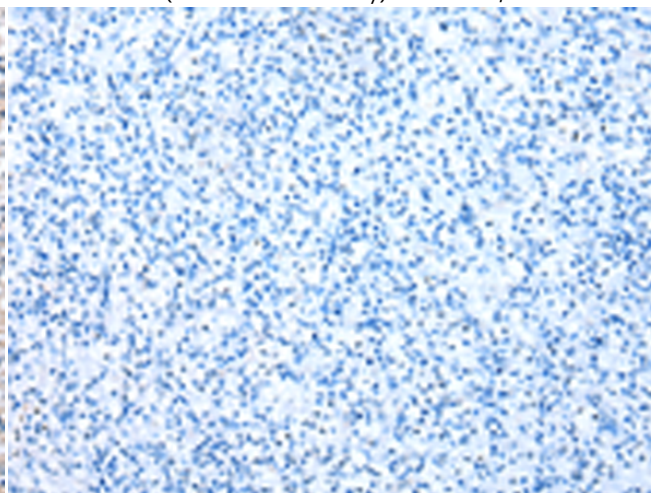
Immunohistochemistry analysis of paraffin embedded Human liver cancer tissue using 218024 (CFAP52 Antibody) at a dilution of 1/25 (Cytoplasm).



In comparison with the IHC on the left, the same paraffin-embedded Human liver cancer tissue is first treated with the fusion protein and then with 218024 (Anti-CFAP52 Antibody) at dilution 1/25.



The image on the left is immunohistochemistry of paraffin-embedded Human prostate cancer tissue using 218024 (Anti-CFAP52 Antibody) at a dilution of 1/25.



In comparison with the IHC on the left, the same paraffin-embedded Human prostate cancer tissue is first treated with fusion protein and then with D223566 (Anti-CFAP52 Antibody) at dilution 1/25.



Product Description

Pioneering GTPase and Oncogene Product Development since 2010
