

CFAP45 RABBIT PAB

货号: S220741

产品全名: CFAP45 兔多抗

基因符号: NESG1; CCDC19

UNIPROT ID: Q9ULI6 (Gene Accession - NP_036469)

背景: CCDC19 is a 466 amino acid protein encoded by a gene mapping to human chromosome 1. Chromosome 1 is the largest human chromosome, spanning about 260 million base pairs and making up 8% of the human genome. There are about 3,000 genes on chromosome 1 and, considering the great number of genes, there are also a large number of diseases associated with chromosome 1. Notably, the rare aging disease Hutchinson-Gilford progeria is associated with the LMNA gene which encodes Lamin A. When defective, the LMNA gene product can build up in the nucleus and cause characteristic nuclear blebs. The mechanism of rapidly enhanced aging is unclear and is a topic of continuing exploration. The MUTYH gene is located on chromosome 1 and is partially responsible for familial adenomatous polyposis. Stickler syndrome, Parkinson's, Gaucher disease and Usher syndrome are also associated with chromosome 1.

抗原: Synthetic peptide of human CFAP45

经过测试的应用: ELISA, IHC

推荐稀释比: IHC: 25-100; ELISA: 2000-5000

种属反应性: Rabbit

克隆性: Rabbit Polyclonal

亚型: Immunogen-specific rabbit IgG

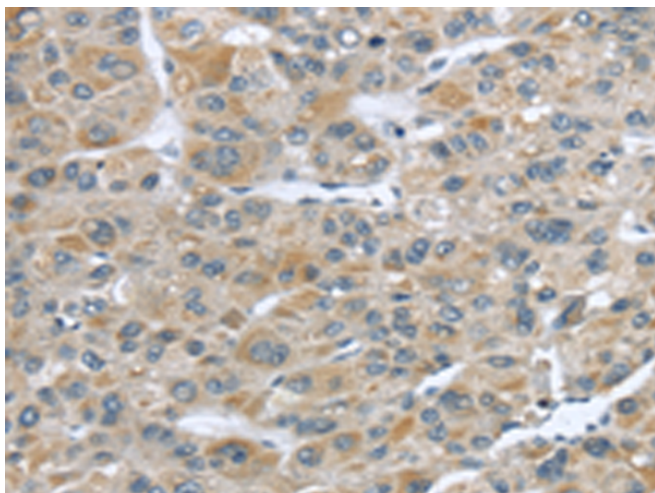
纯化: Antigen affinity purification

种属反应性: Human

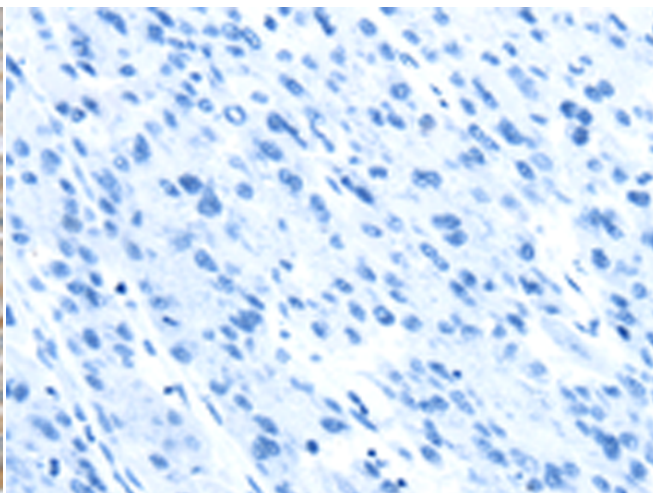
成分: PBS (without Mg²⁺ and Ca²⁺), pH 7.4, 150 mM NaCl, 0.05% Sodium Azide and 40% glycerol

研究领域: Cell Biology, Immunology

储存和运输: Store at -20°C. Avoid repeated freezing and thawing



Immunohistochemistry analysis of paraffin embedded Human liver cancer tissue using 220741(CFAP45 Antibody) at a dilution of 1/25(Cytoplasm).



In comparison with the IHC on the left, the same paraffin-embedded Human liver cancer tissue is first treated with the synthetic peptide and then with 220741(Anti-CFAP45 Antibody) at dilution 1/25.