

## CETN3 RABBIT PAB

货号: S212201

产品全名: CETN3 兔多抗

基因符号: CEN3; CDC31

**UNIPROT ID:** O15182 (Gene Accession - BC005383)

**背景:** The protein encoded by this gene contains four EF-hand calcium binding domains, and is a member of the centrin protein family. Centrins are evolutionarily conserved proteins similar to the CDC31 protein of *S. cerevisiae*. Yeast CDC31 is located at the centrosome of interphase and mitotic cells, where it plays a fundamental role in centrosome duplication and separation. Multiple forms of the proteins similar to the yeast centrin have been identified in human and other mammalian cells, some of which have been shown to be associated with centrosome fractions. This protein appears to be one of the most abundant centrins associated with centrosome, which suggests a similar function to its yeast counterpart. Alternatively spliced transcript variants encoding different isoforms have been found for this gene.

**抗原:** Full length fusion 蛋白

**经过测试的应用:** ELISA, WB, IHC

**推荐稀释比:** IHC: 30-150;WB: 200-1000;ELISA: 5000-10000

**种属反应性:** Rabbit

**克隆性:** Rabbit Polyclonal

**亚型:** Immunogen-specific rabbit IgG

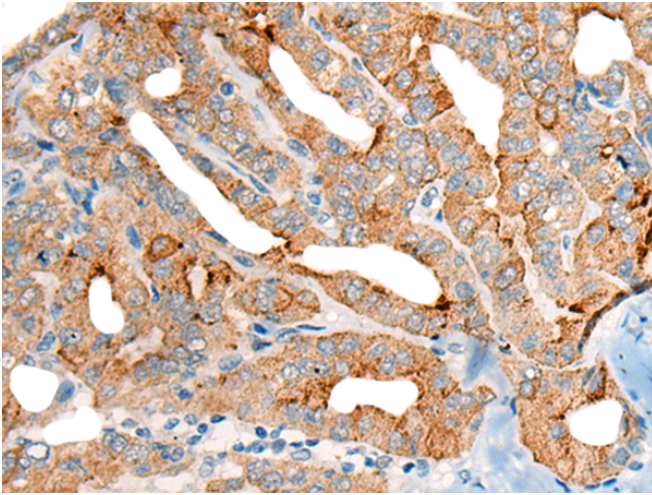
**纯化:** Antigen affinity purification

**种属反应性:** Human, Mouse

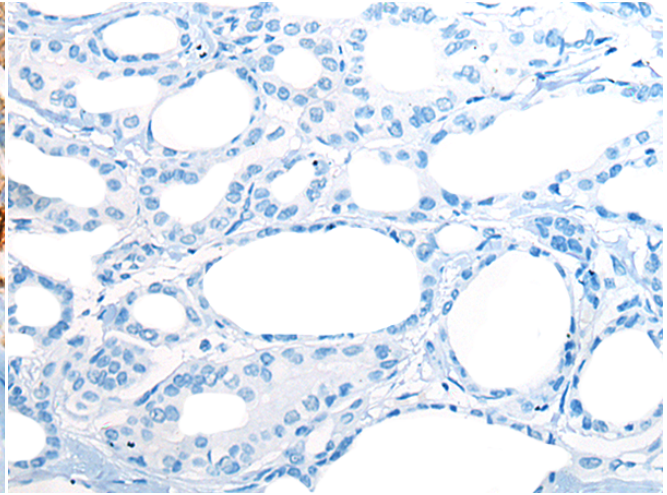
**成分:** PBS (without Mg<sup>2+</sup> and Ca<sup>2+</sup>), pH 7.4, 150 mM NaCl, 0.05% Sodium Azide and 40% glycerol

**研究领域:** Epigenetics and Nuclear Signaling, Signal Transduction

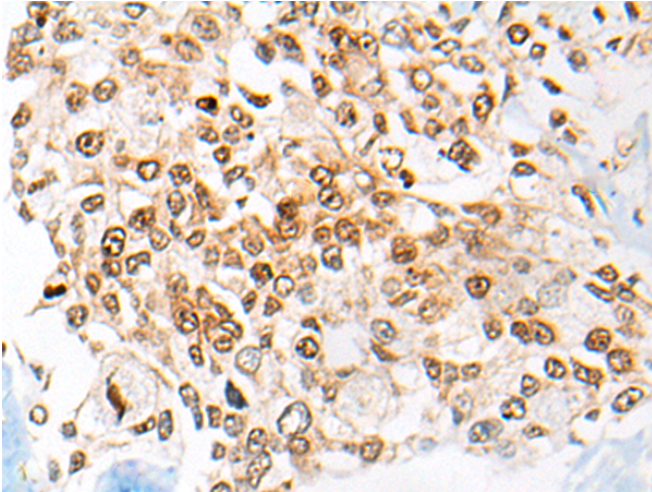
**储存和运输:** Store at -20°C. Avoid repeated freezing and thawing



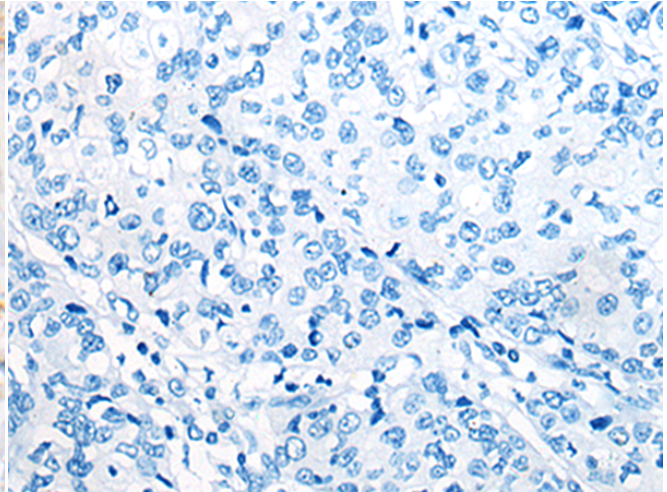
Immunohistochemistry analysis of paraffin embedded Human thyroid cancer tissue using 212201(CETN3 Antibody) at a dilution of 1/45(Cytoplasm or Nucleus).



In comparison with the IHC on the left, the same paraffin-embedded Human thyroid cancer tissue is first treated with the fusion protein and then with 212201(Anti-CETN3 Antibody) at dilution 1/45.

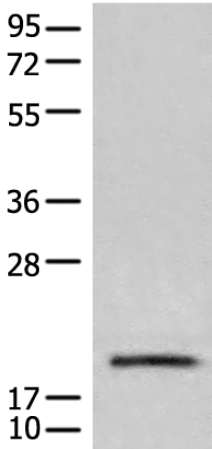


The image on the left is immunohistochemistry of paraffin-embedded Human prostate cancer tissue using 212201(Anti-CETN3 Antibody) at a dilution of 1/45.



In comparison with the IHC on the left, the same paraffin-embedded Human prostate cancer tissue is first treated with fusion protein and then with D124512(Anti-CETN3 Antibody) at dilution 1/45.

kDa



Gel: 12%SDS-PAGE, Lysate: 40 µg;  
Lane: TM4 cell lysate;  
Primary antibody: 212201(CETN3 Antibody) at dilution 1/650;  
Secondary antibody: Goat anti rabbit IgG at 1/8000 dilution;  
Exposure time: 1 minute



# Product Description

Pioneering GTPase and Oncogene Product Development since 2010

---