

## CERT1 RABBIT PAB

货号: S217297

产品全名: CERT1 兔多抗

基因符号: CERT; GPBP; CERTL; MRD34; STARD11; COL4A3BP

**UNIPROT ID:** Q9Y5P4 (Gene Accession - BC000102)

**背景:** This gene encodes a kinase that specifically phosphorylates the N-terminal region of the non-collagenous domain of the alpha 3 chain of type IV collagen, known as the Goodpasture antigen. Goodpasture disease is the result of an autoimmune response directed at this antigen. One isoform of this protein is also involved in ceramide intracellular transport. Three transcript variants encoding different isoforms have been found for this gene. [provided by RefSeq, Jul 2008]

**抗原:** Fusion protein of human CERT1

**经过测试的应用:** ELISA, IHC

**推荐稀释比:** IHC: 50-200; ELISA: 2000-5000

**种属反应性:** Rabbit

**克隆性:** Rabbit Polyclonal

**亚型:** Immunogen-specific rabbit IgG

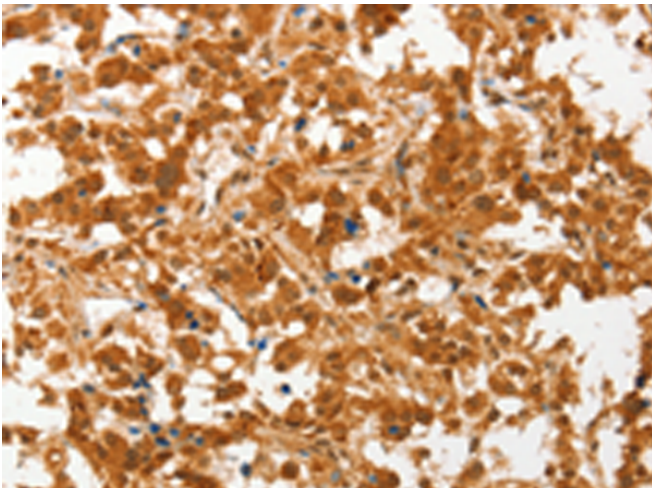
**纯化:** Antigen affinity purification

**种属反应性:** Human, Mouse


**成分:** PBS (without Mg<sup>2+</sup> and Ca<sup>2+</sup>), pH 7.4, 150 mM NaCl, 0.05% Sodium Azide and 40% glycerol

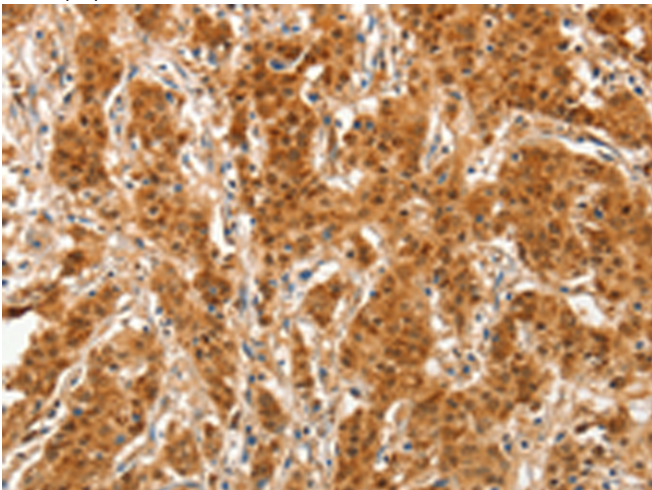
**研究领域:** Metabolism, Signal Transduction, Cancer, Immunology

**储存和运输:** Store at -20°C. Avoid repeated freezing and thawing

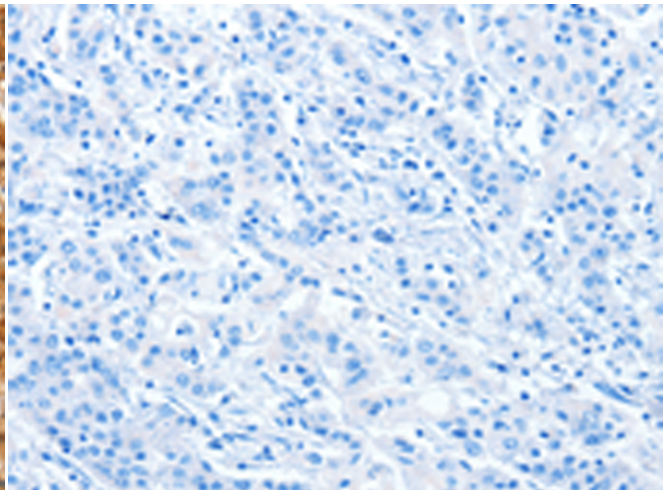


Immunohistochemistry analysis of paraffin embedded Human thyroid cancer tissue using 217297(CERT1 Antibody) at a dilution of 1/50(Cytoplasm).

 In comparison with the IHC on the left, the same paraffin-embedded Human thyroid cancer tissue is first treated with the fusion protein and then with 217297(Anti-CERT1 Antibody) at dilution 1/50.



The image on the left is immunohistochemistry of paraffin-embedded Human gastric cancer tissue using 217297(Anti-CERT1 Antibody) at a dilution of 1/50.



In comparison with the IHC on the left, the same paraffin-embedded Human gastric cancer tissue is first treated with fusion protein and then with D222132(Anti-CERT1 Antibody) at dilution 1/50.



# Product Description

Pioneering GTPase and Oncogene Product Development since 2010

---