

CERS6 RABBIT PAB

货号: S220671

产品全名: CERS6 兔多抗

基因符号: CERS5; LASS6

UNIPROT ID: Q6ZMG9 (Gene Accession - NP_982288)

背景: The LASS (longevity assurance homolog) family members are highly conserved from yeasts to mammals. Six members of this family of proteins have been characterized (LASS1, LASS2, LASS3, LASS4, LASS5 and LASS6) and they all are involved in sphingolipid synthesis. LASS6 is a widely expressed 384 amino acid endoplasmic reticulum, multi-pass membrane protein. On the luminal side of the endoplasmic reticulum membrane, the N-terminal asparagine residue is glycosylated. In cells deficient for CLN9, LASS6 corrects growth and apoptosis, and increases the levels of short ceramide species, such as C14:0- and C16:0-ceramides.

抗原: Synthetic peptide of human CERS6

经过测试的应用: ELISA, IHC

推荐稀释比: IHC: 50-200; ELISA: 2000-5000

种属反应性: Rabbit

克隆性: Rabbit Polyclonal

亚型: Immunogen-specific rabbit IgG

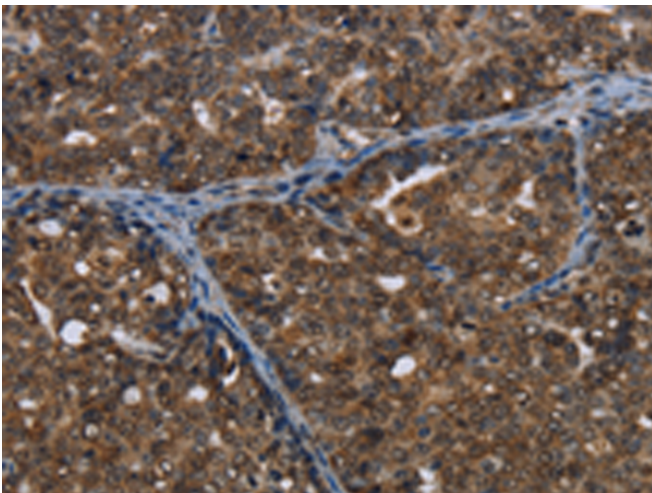
纯化: Antigen affinity purification

种属反应性: Human, Mouse

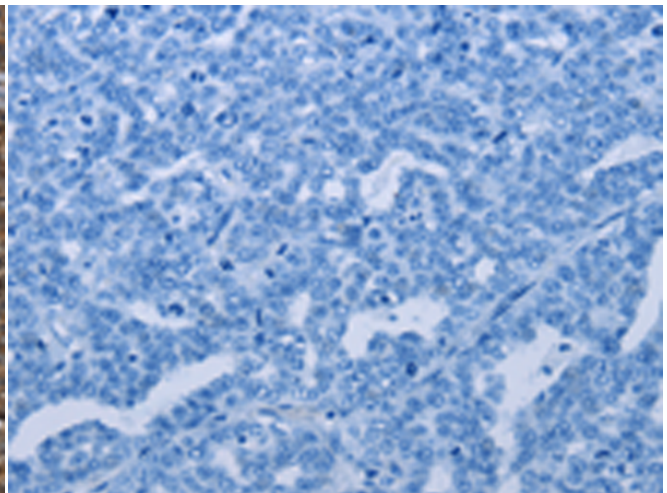
成分: PBS (without Mg²⁺ and Ca²⁺), pH 7.4, 150 mM NaCl, 0.05% Sodium Azide and 40% glycerol

研究领域: Metabolism, Cancer

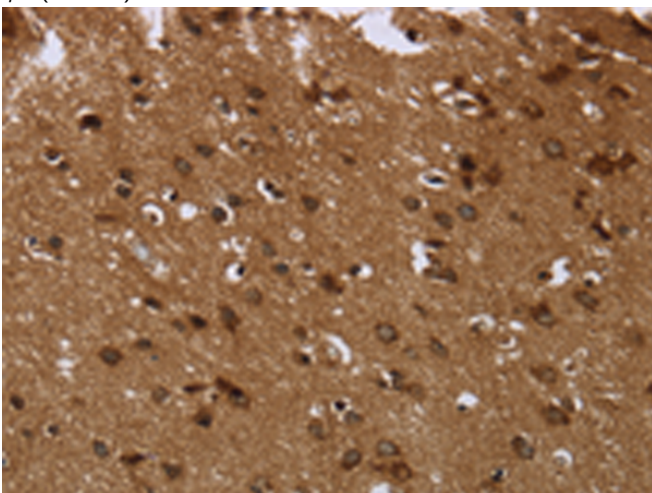
储存和运输: Store at -20°C. Avoid repeated freezing and thawing



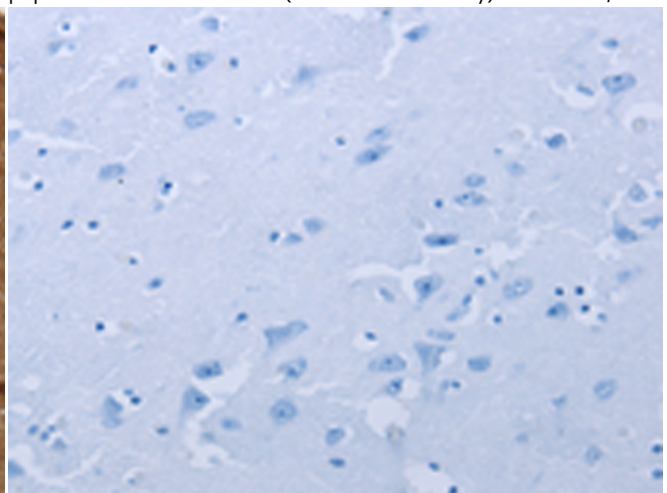
Immunohistochemistry analysis of paraffin embedded Human ovarian cancer tissue using 220671(CERS6 Antibody) at a dilution of 1/35(Nucleus).



In comparison with the IHC on the left, the same paraffin-embedded Human ovarian cancer tissue is first treated with the synthetic peptide and then with 220671(Anti-CERS6 Antibody) at dilution 1/35.



The image on the left is immunohistochemistry of paraffin-embedded Human brain tissue using 220671(Anti-CERS6 Antibody) at a dilution of 1/35.



In comparison with the IHC on the left, the same paraffin-embedded Human brain tissue is first treated with synthetic peptide and then with D261851(Anti-CERS6 Antibody) at dilution 1/35.



Product Description

Pioneering GTPase and Oncogene Product Development since 2010
